

Porsche - PCM 3.1 Video Interface



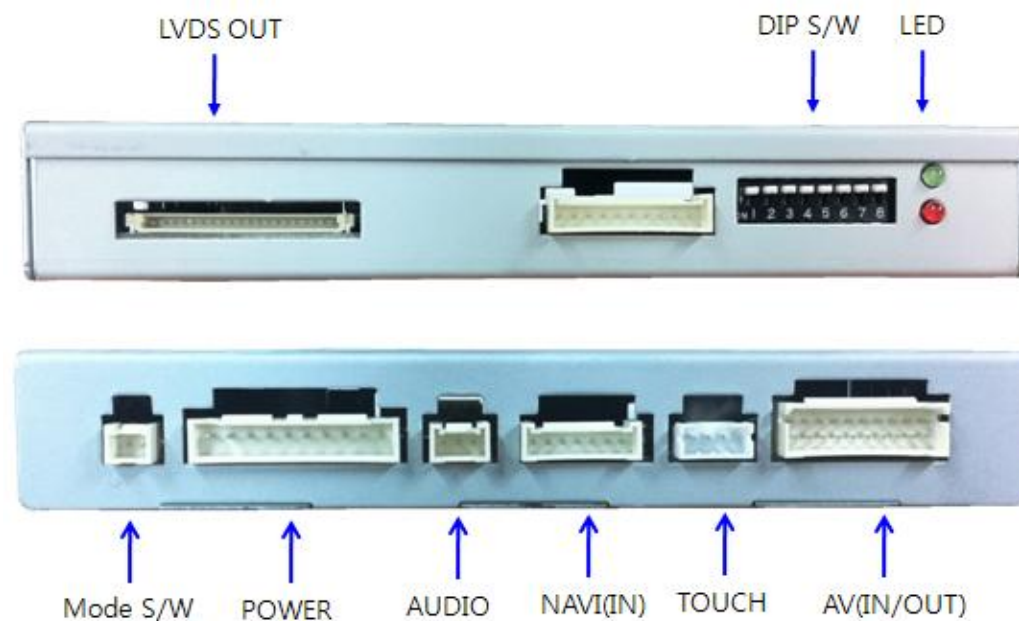
Specification

About Interface

- Dimension

127mm * 83mm * 22mm

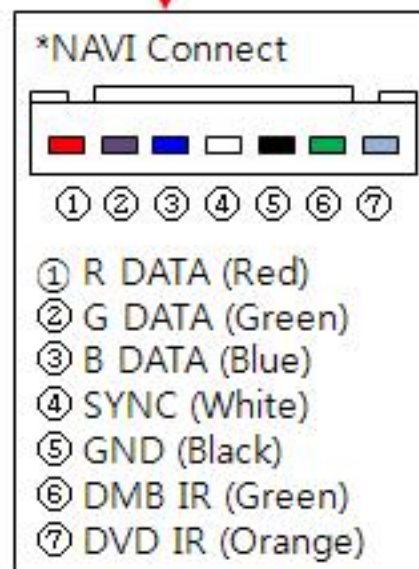
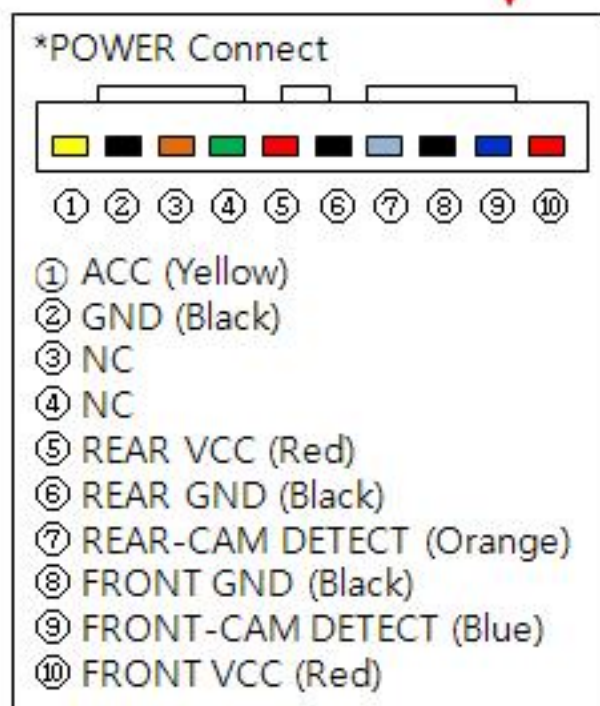
- External Appearance



* This can change under manufacturer's circumstance

Specification

Connector Pin Assignment



Product Composition

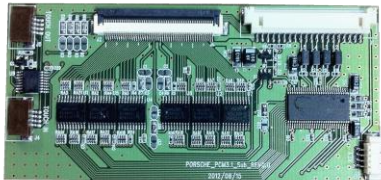
Interface Board 1 EA



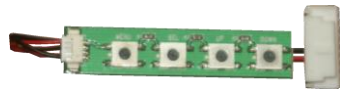
A/V Cable 1 EA



Sub Board 1 EA



OSD Keypad 1 EA



Power Cable 1 EA



LVDS Cable (800mm) 1 EA



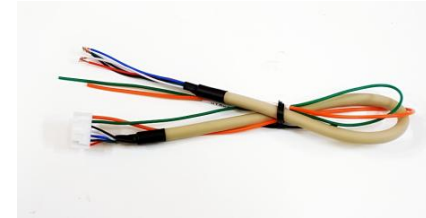
LVDS FPC Cable 1 EA



KEY FPC Cable 1 EA



RGB Navi Cable 1 EA



Audio Cable 1 EA



Touch FPC Cable(300mm) 2 EA



Specification

DIP S/W Setting

※ ON : DOWN , OFF : UP

PIN	FUNCTION	DIP S/W Selection
1	RGB INPUT MUTE	ON : Skipping RGB Mode OFF : NAVI Display
2	AV1 MUTE	ON : Skipping AV1 OFF : AV1 Display
3	AV2 MUTE	ON : Skipping AV2 OFF : AV2 Display
4	NAVI	ON : NAVI-AV OFF : NAVI-RGB
5	N.C	
6	N.C	
7	N.C	
8		

Mode Change

Mode Change Control







Return OEM Display

Mode Change

Specification

OSD MENU

First Menu	Second Menu	Third Menu	Action	ELT-980XU Slim	AMPIRE DVX-101		
Config	NAVI-RGB	GI4000	Selection Korea 480*234				
		GI8000	Selection Korea 800*480				
		GI8000 3G	Selection Korea 800*480				
		PANASONIC	Selection Taiwan 480*234				
		PT-GPS800A	Selection China 480*234				
		KD900(WVGA)	Selection China 800*480			SANYO	NECVOX
		KD900(WQVGA)	Selection China 480*234				
		PURENAV18	Selection Taiwan 480*234				
		SINGAPORE	Selection Singapore 480*234				
	NAVI-AV						
	DVD	ELT-980XU Slim	Selection Europe				
		LCKT	Selection China				
		SANYO	Selection China				
		NECBOX DVA-3206	Selection China				
		AMPIRE DVX-101	Selection Singapore				
		PIONEER	Selection Japan				

OSD MENU

First Menu	Second Menu	Third Menu	Action	DVBT55HD	Pioneer	
Config	DVB-T(DMB)	ELT-DVBT20	Selection Europe			
		NET-770	Selection Korea			
		MEDIALIFE	Selection Korea			
		PANASONIC	Selection Japan			
		PIONEER	Selection Japan			
		GEX-DTV	Selection Japan	DVB-T2010HD		
		PORTUGAL	Selection Europe			
		DVB-T20010HD	Selection Europe			
		DVBT55-HD	Selection Europe			
	CMMB-ZW	Selection China				
Reset	EXCUTE	Config Menu all Reset				
LCKT	PIONEER	ELT-DVBT20	Portugal	CMMB-ZW	GEX-DTV	
						

Specification

OSD Menu

MENU	Option	NAVI
Config	RearCam-Type	ExtDevice
Option	RearCam-Power	Off
Image	FrontCam-Type	ExtDevice
Screen	FrontCam-Power	Off
Parking	Safe Mode	Off

First Menu	Second Menu	Third Menu	Action
Option	RearCam - Type	OEM	Original Rear camera
		ExtDevice	Use aftermarket Rear camera
	RearCam -Power	ON	Rear camera get +12V consistently
		AUTO	Rear camera get +12V when reverse gear on.
		OFF	Shut out the power supply.
	FrontCam -Type	OEM	Original Front camera
		ExtDevice	Use aftermarket Front camera
	FrontCam - Power	ON	Front camera get +12V consistently
		AUTO	Front camera get +12V when reverse gear on.
		OFF	Shut out the power supply.
	RearCam-RcvOpt	ON	Show Frontcam 25sec after rear mode.
		OFF	Default
	Reset	Excute	Option Menu all Reset

OSD Menu

► Navi-RGB Menu

First Menu	Second Menu	Third Menu	Action
Image	Brightness		Adjust the value of brightness
	Contrast		Adjust the value of contrast
	Color – Red		Adjust the value of RED
	Color –Green		Adjust the value of GREEN
	Color –Blue		Adjust the value of BLUE
	Reset	Excute	Option Menu all Reset

► DVD,DVB-T(DTV),Navi – AV, Rear, Front Menu

First Menu	Second Menu	Third Menu	Action
Image	Brightness		Adjust the value of brightness
	Contrast		Adjust the value of contrast
	Saturation		Adjust the value of Saturation
	Hue		Adjust the value of Hue
	Sharpness		Adjust the value of Sharpness
	Reset	Excute	Option Menu all Reset

OSD Menu

► OSD Setting – Parking Mode

MENU	Parking	REAR
Image	Display	On Off
OSD	Horizontal	50
Parking	Vertical	50
Config	TP	40
Utility	AutoPower	Off

- Display : Parking line display On/Off
- Horizontal : Parking line move Left/Right
- Vertical : Parking line move Up/Down
- TP : Parking line clarity
- AutoPower : Parking line ACC control



Horizontal

Vertical

- On:** Rear camera get a power supply when reverse gear on.
But, Depend on camera Spec. sometimes noise image happen.
- Off:** Rear camera get a power supply continuous.



Connect to back-light wire.

Connect to rear camera Acc and GND.

Specification

OSD Menu

► OSD Setting – Utility Mode

MENU	Utility	NAVI
Image	Reset All	Execute Cancel
OSD	Info	System Version = 01.01
Parking		
Config		
Utility		

- Reset All : Initialization
- Info: Software version.

► OSD Setting – Utility Mode

MENU	Screen	NAVI
Config	Horizontal	50
Option	Vertical	50
Image	Scale X Up	50
Screen	Scale X Down	50
Parking	Scale Y Up	50

- Horizontal
- Vertical
- Scaler X Up
- Scaler X Down
- Scaler Y Up
- Scaler Y Down

Install

Install – Head Unit



Install

Install – Monitor (1)

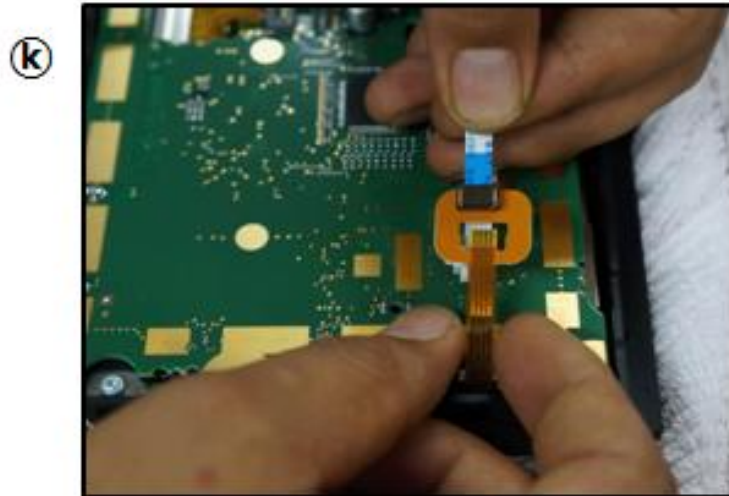


Install

Install – Monitor (2)



Touch OUT cable connection



Touch IN cable connection



LVDS FPC cable connection

Install

Install – Monitor (3)

Ⓜ



Key FPC cable connection

Ⓝ



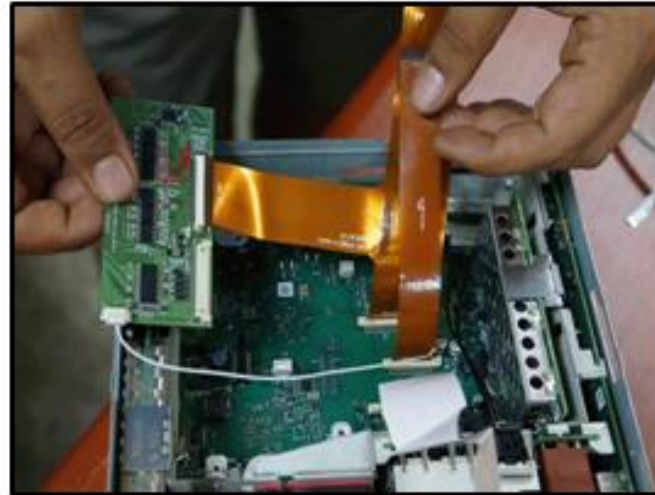
LVDS FPC cable connection

ⓐ



Key FPC cable connection

ⓑ



Sub Board connection

Install

Install – Sub Board



Touch Cable connection



Oem Display



Navigation GI-5000 Display



Video Display

Specification