

Global Automotive Systems



Chrysler 2012 – JEEP & Grand Cherokee (‘VES’ Room) Manual + Navigation



Contents

2	Spec
3	Classification
4	External Appearance
5	Connector Pin Assignment
6	Product Composition
7	DIP S/W Setting
10	Steering Wheel Button
11	Installation
27	Contact us

Spec

1. Input Spec. (MULTI VIDEO INTERFACE)

- 1 x Analog RGB Input (Navigation System output)
- 1 x UART Port (Touch control)

2. Output Spec.

- 1 x Rear Camera Power
- 1 x Navigation ACC On Signal

3. Power Spec.

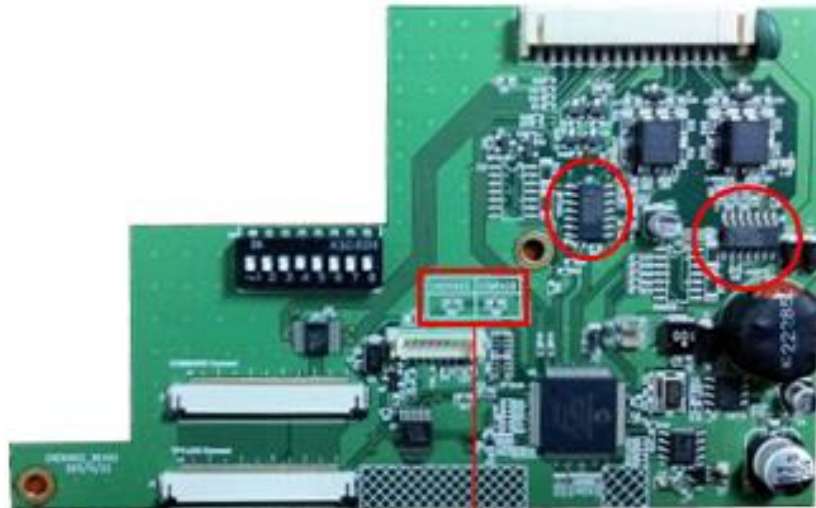
- Input Power : 8VDC ~ 24VDC
- Consumption Power : 5Watt, Max

4. Switch Input mode

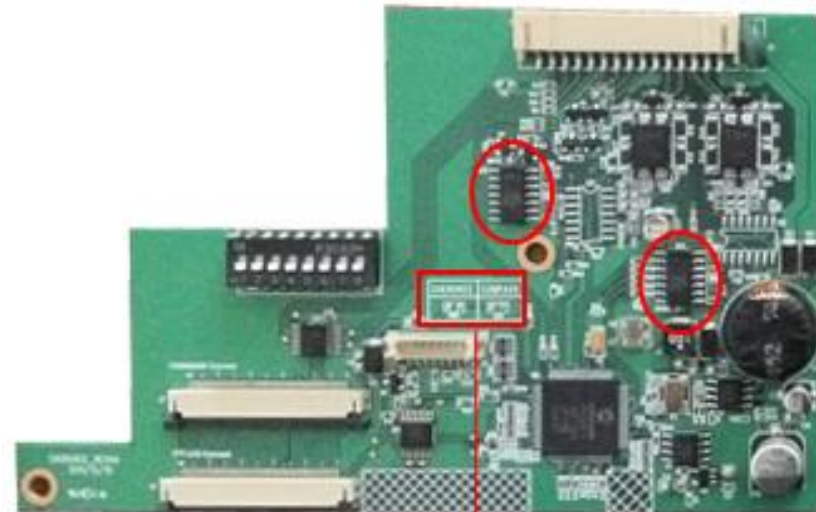
- Possible to switch input mode with toggle switch.
- By button on the Steering wheel in the car via CAN
- By button on the Commander in the car via CAN

Classification

- Grand Cherokee
- Wrangler Rubicon



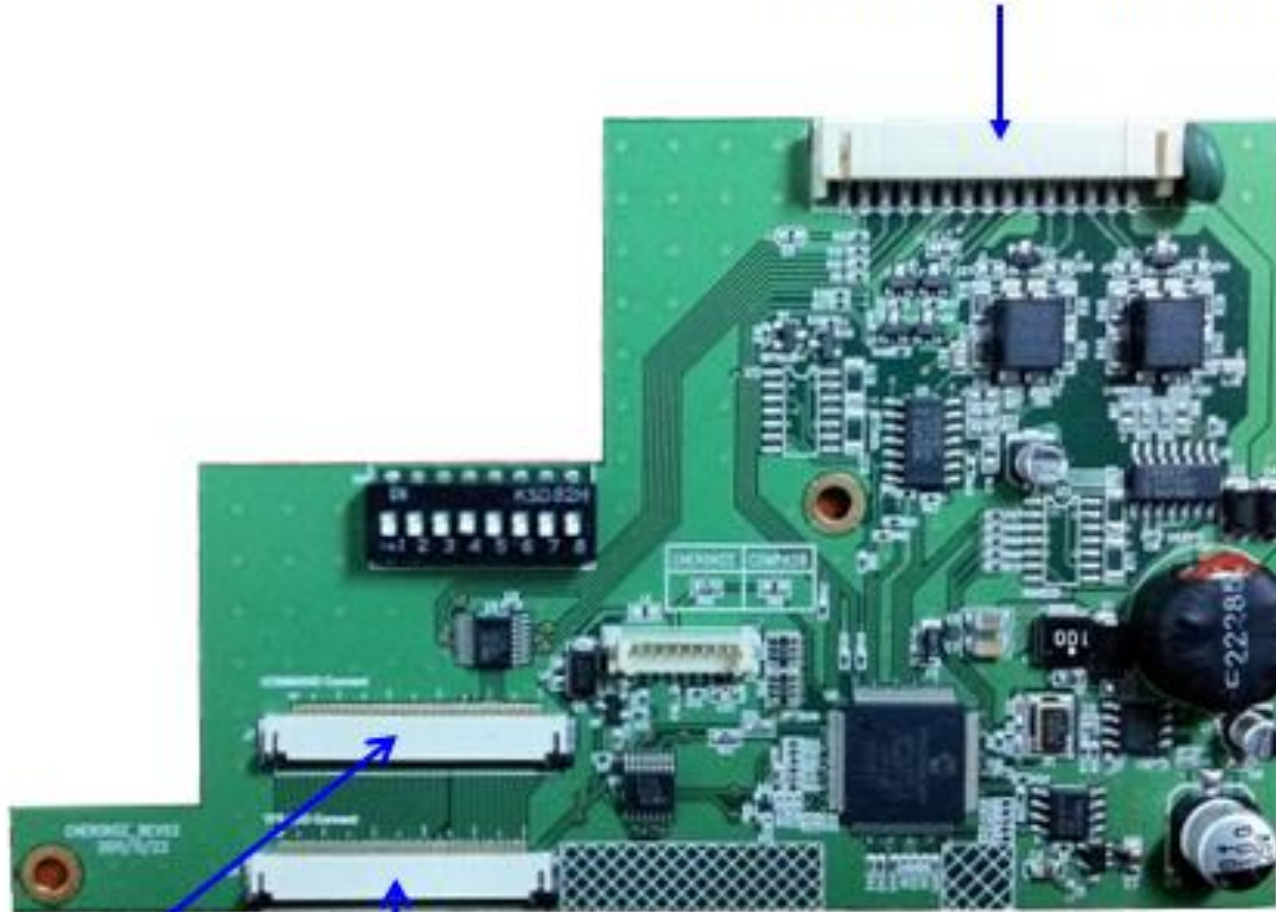
- COMPASS



* This can change under manufacturer's circumstance Size : 127 mm * 79 mm

External Appearance

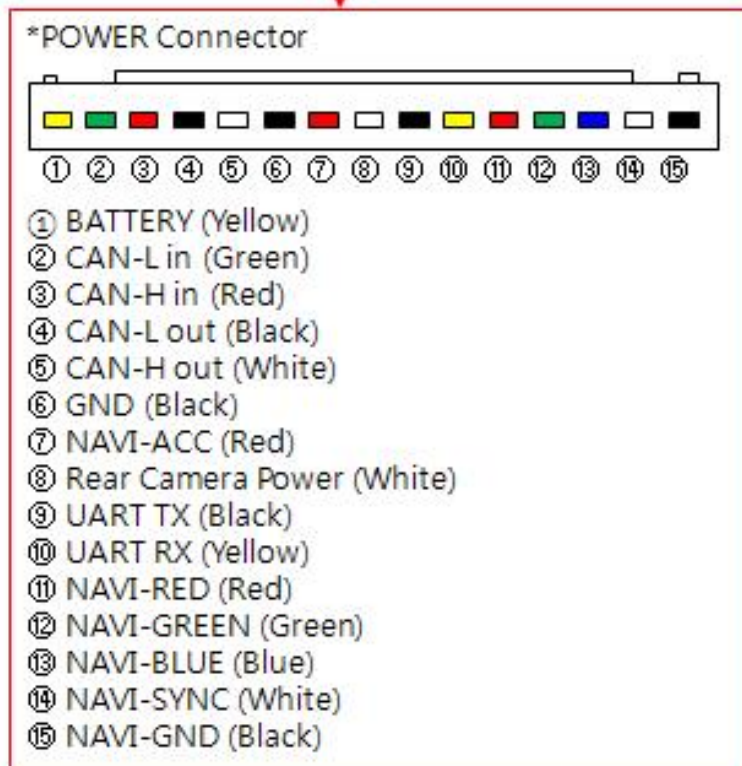
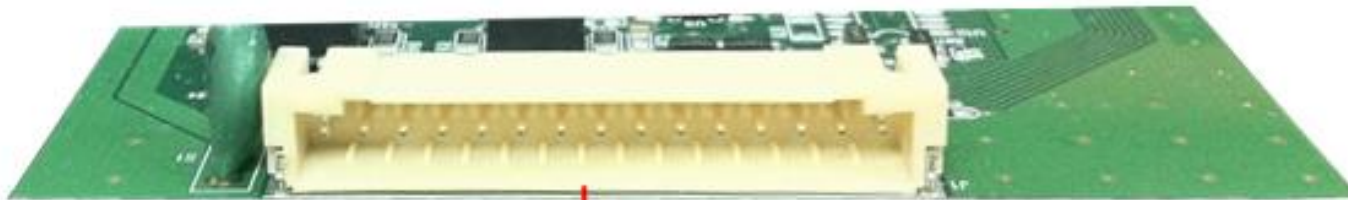
POWER/CAN/RGB/UART



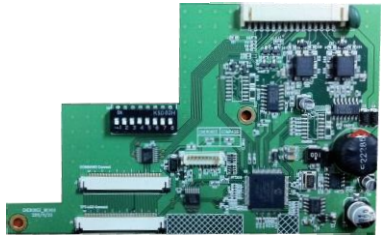
FFC 50pin Cable

OEM CABLE

Connector Pin Assignment



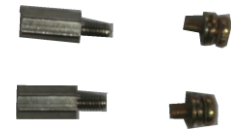
Product Composition



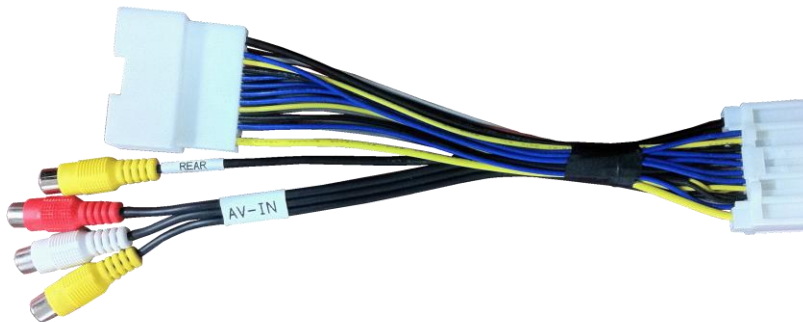
Interface Board 1 EA



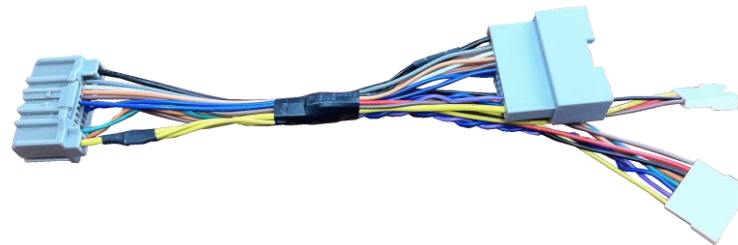
FFC Cable 1 EA



BEAM, BOLT 2 EA



A/V Cable 1 EA



POWER/CAN Cable 1 EA



INTERFACE Cable 1 EA

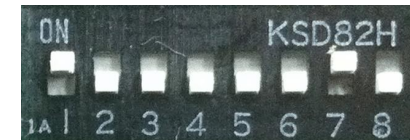


<- GPS Cable

DIP S/W Setting

※ ON : DOWN , OFF : UP

PIN	FUNCTION	DIP S/W Selection	
		ON	OFF
1	GPS INPUT MUTE	ON	: GPS Display
		OFF	: Skipping GPS Mode
2	N.C		
3	GPS Selection	ON	: KD-900X GPS use
		OFF	: GI-4000 GPS use
4	VES Mode	ON	: Ext. Video use
		OFF	: Not Use
5	N.C		
6	DTV-FREE	ON	: Use
		OFF	: Not Use
7	REAR Mode	ON(7), ON(8)	: OEM Rear Camera
8		ON(7),OFF(8)	: Not use Rear Camera
		OFF(7),ON(8)	: Interface Rear Camera
		OFF(7),OFF(8)	: NAVI Rear Camera



Use GPS
Not use rear camera



Use GPS
Use oem Rear camera



Use GPS
Use external rear camera with AV1.

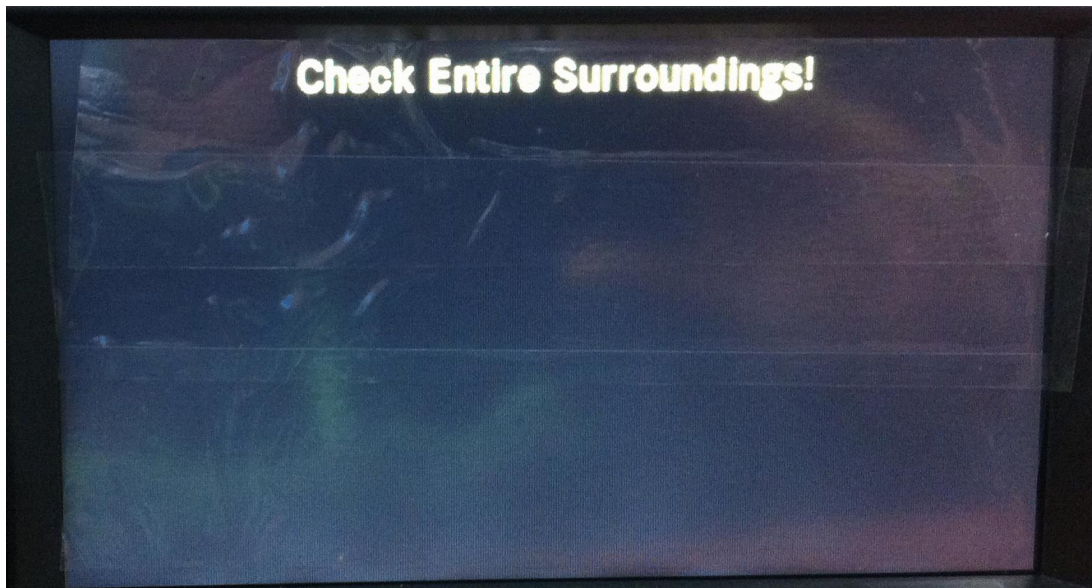
DIP S/W Setting

※ Select **“Interface Rear camera”** on REAR MODE.

Dip S/W **OFF(7),ON(8) : Interface Rear Camera**



After **“Check Entire Surroundings!”** Message. Than appear rear camera image.

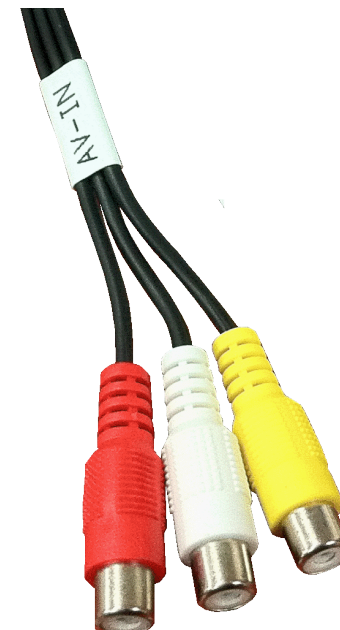
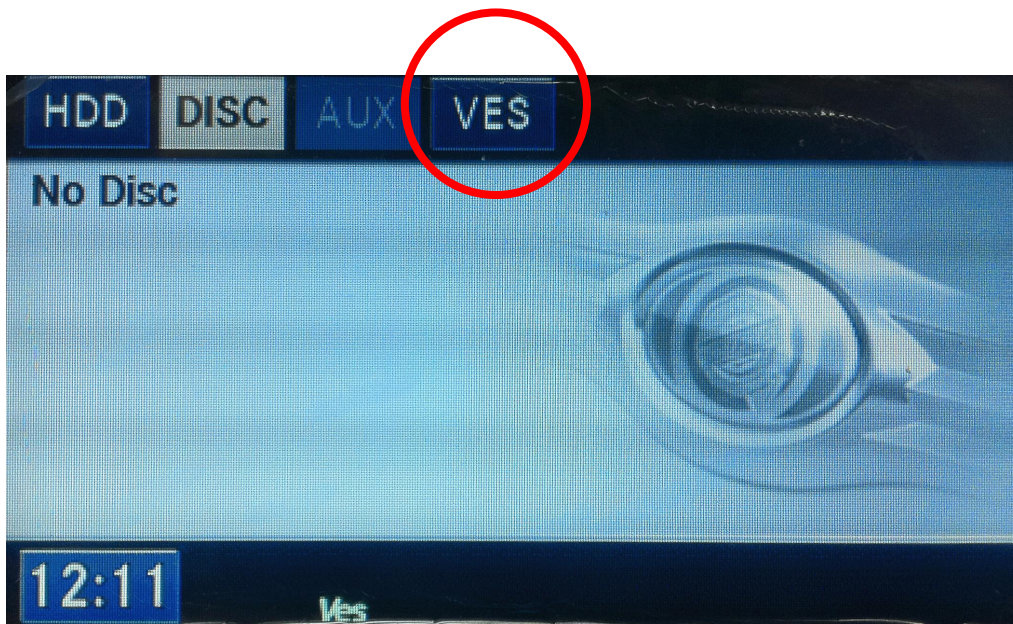


DIP S/W Setting

※ Select "VES MODE"



"VES" Icon appears on the screen. Than touch "VES" icon, than change to AV mode. But, "Grand Voyager and original VES option car, **cannot use!**



Steering Wheel Button



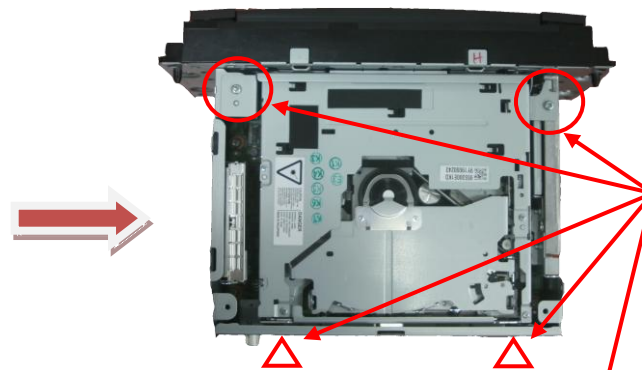
Push 1 sec, change to Navigation Mode.

Installation (Monitor Part)



Remove the screw

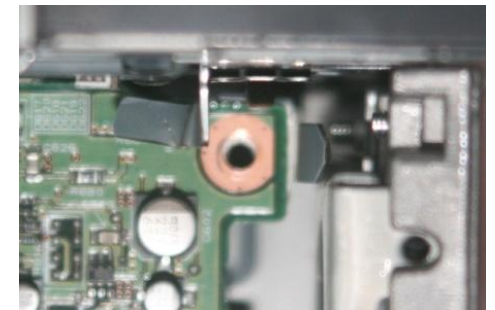
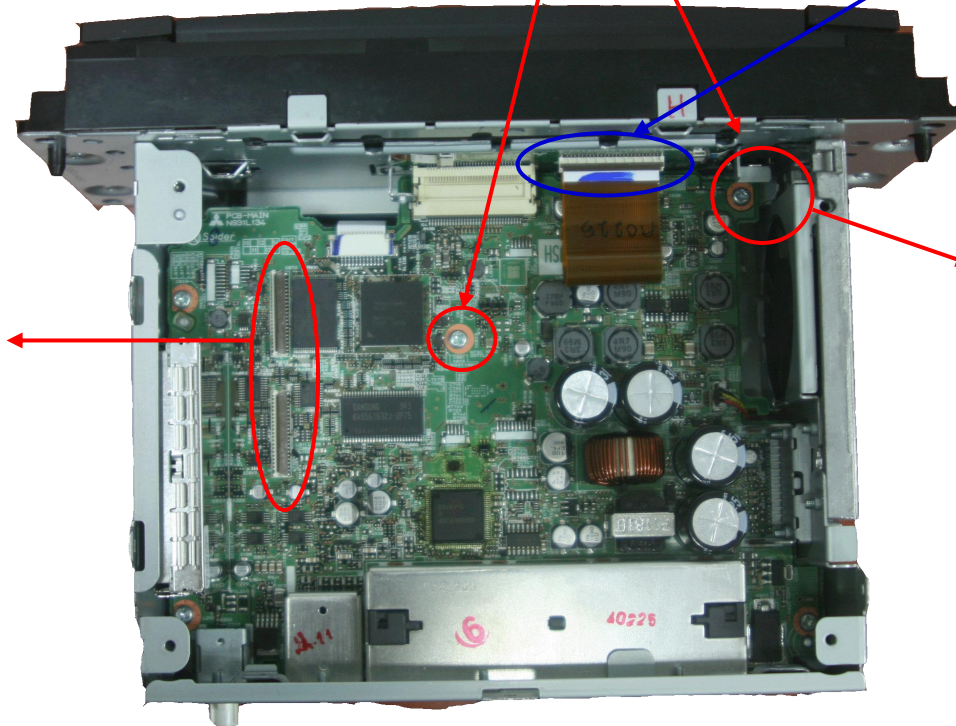
Installation (Audio Deck Part)



Remove the Screw / Separate the FFC cable

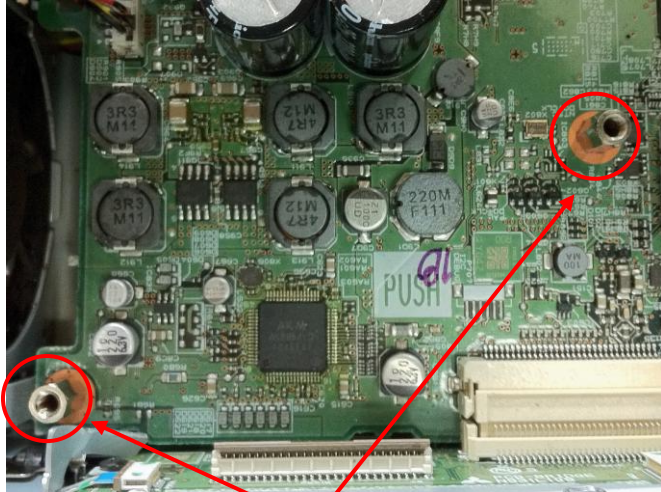


Separate the DVD

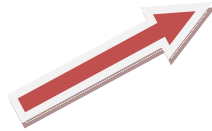
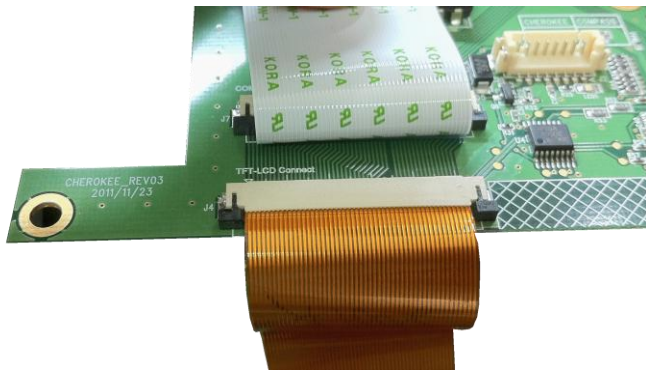


Bend like a photo for support beam

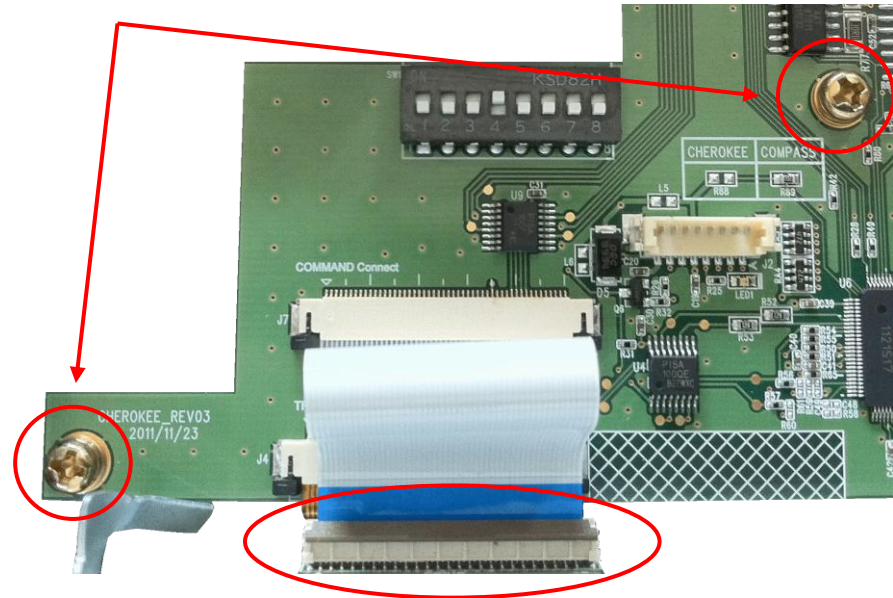
Installation (Interface Part)



Install the support beam



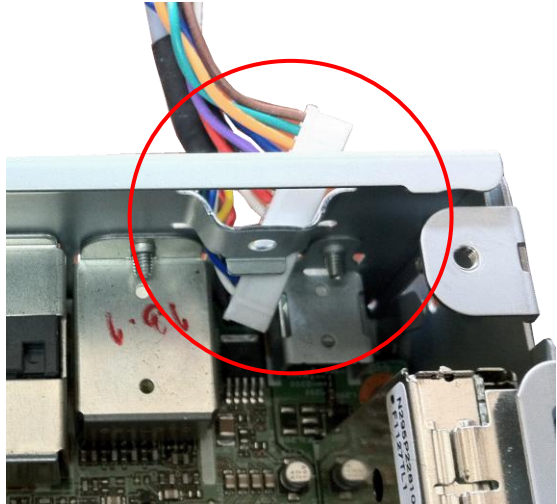
Screw the bolts



Connect to our FPC cable

Monitor FPC cable connect to interface

Installation (Cable Part)



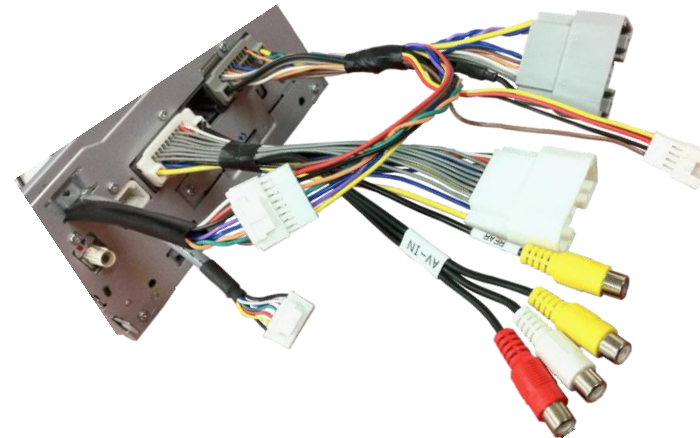
Our cable put into the H/U



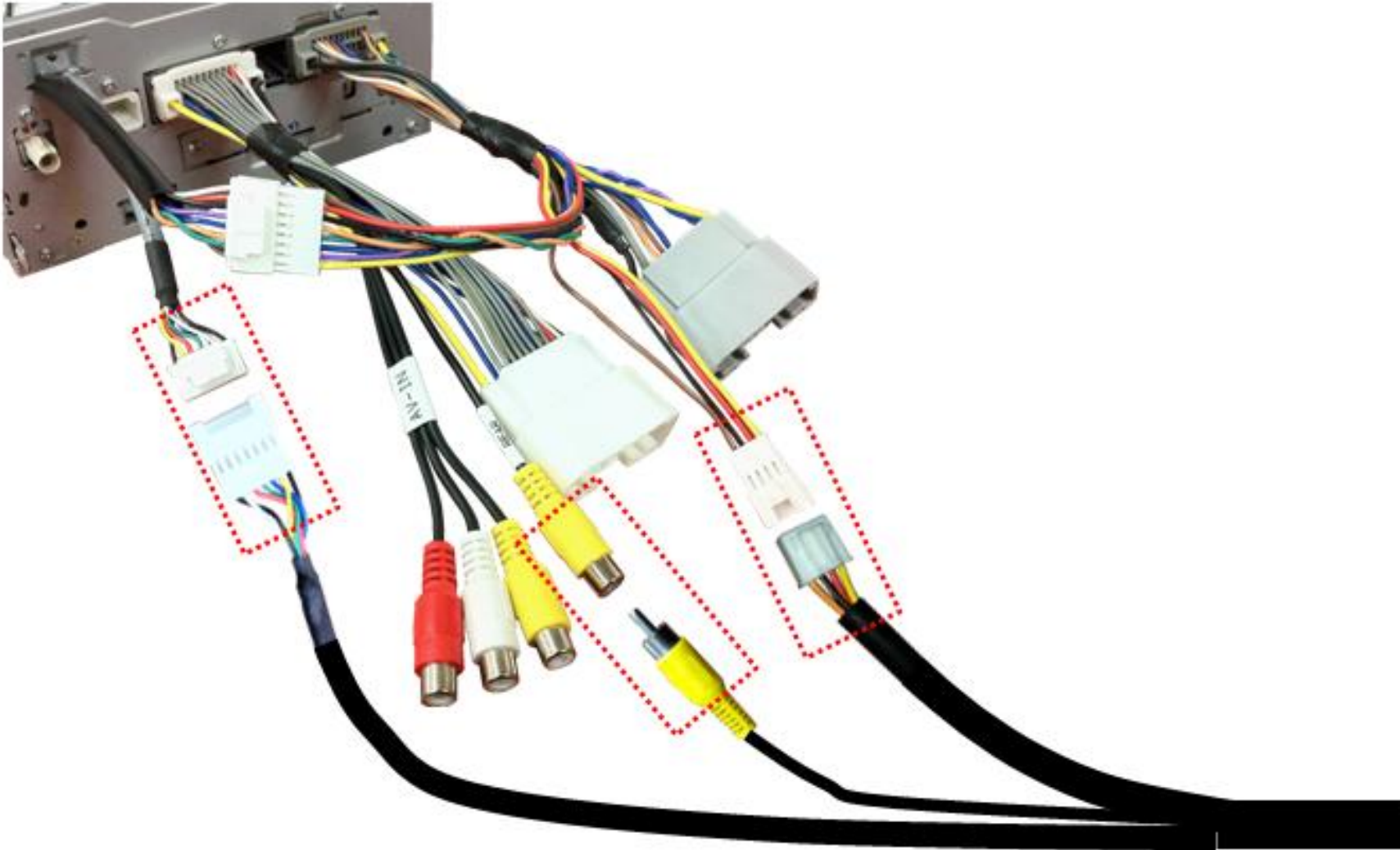
Interface cable

A/V cable

POWER/CAN cable



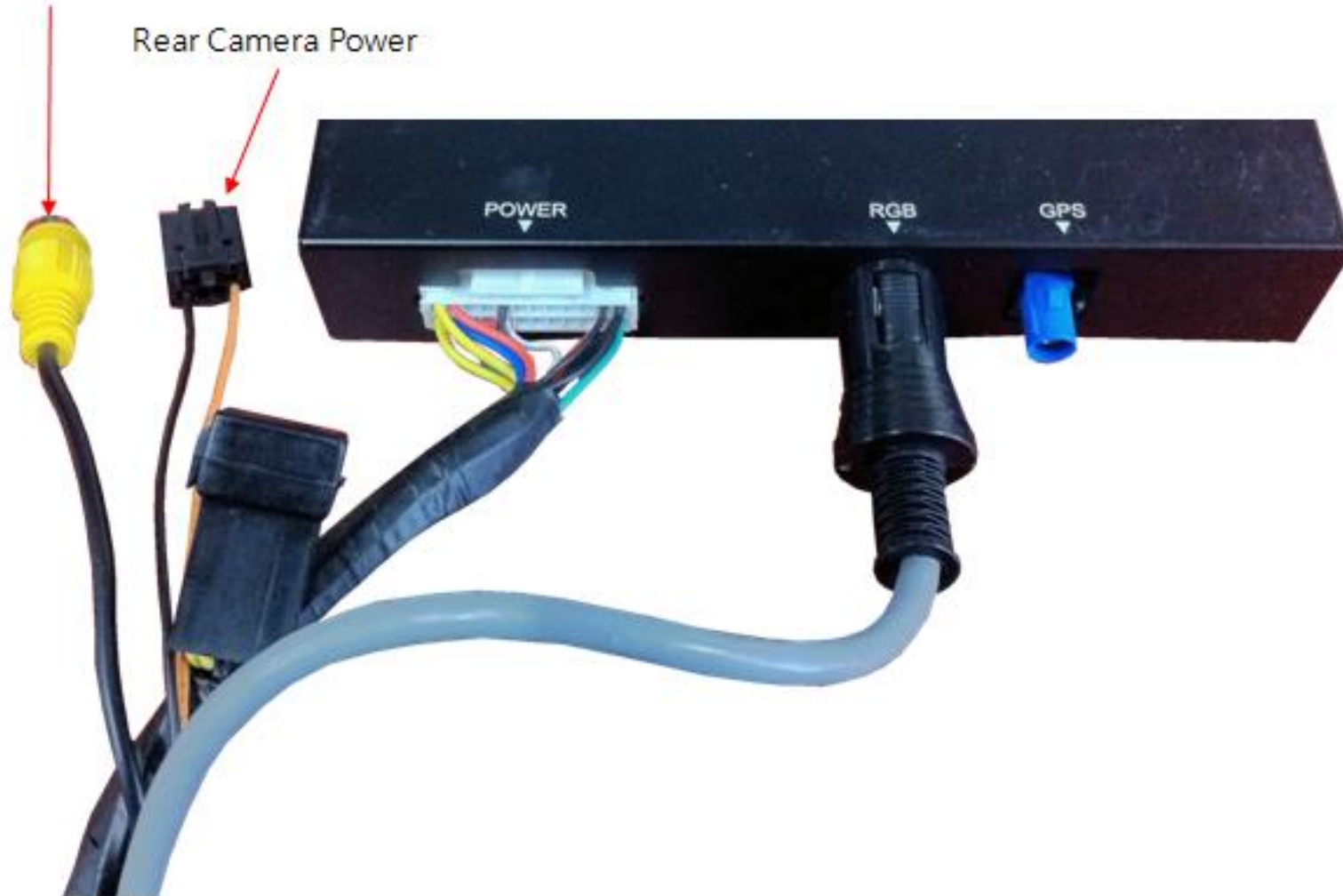
Installation (Cable Connection)



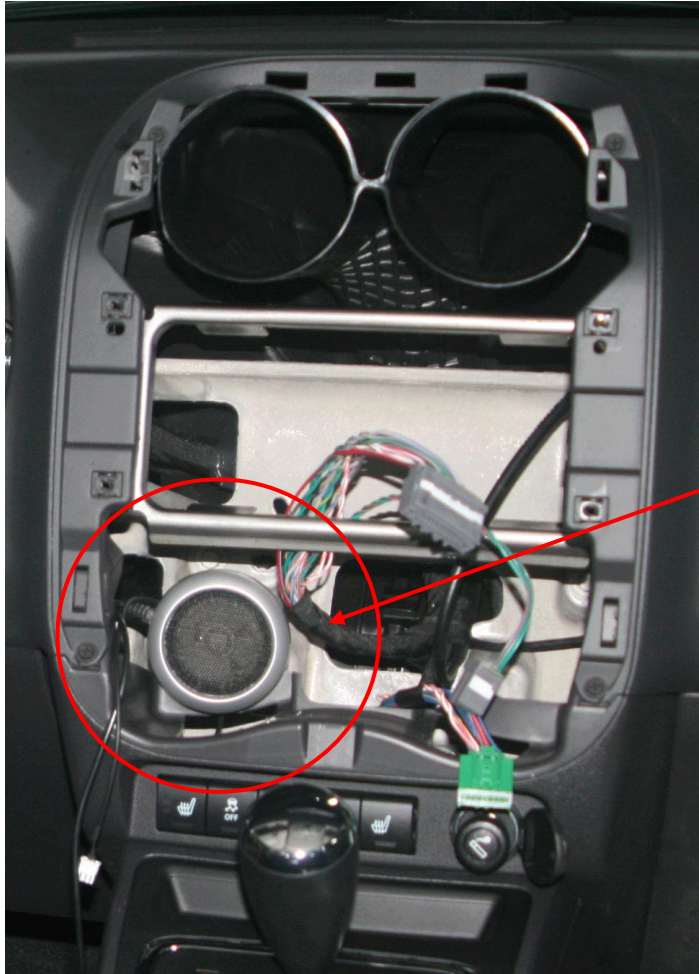
Installation (Navigation Connection)

Rear Camera

Rear Camera Power



Installation (Speaker Part)

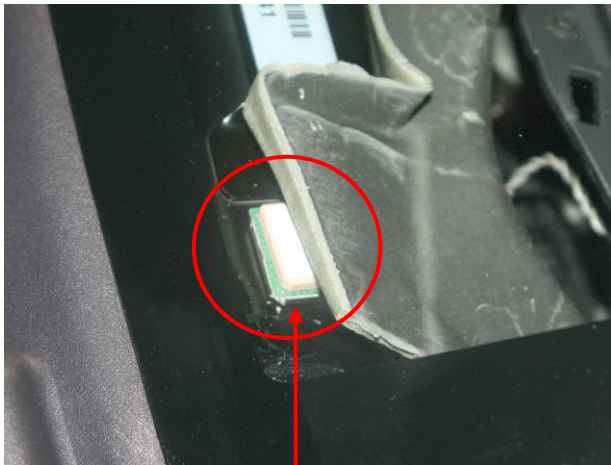


Speaker

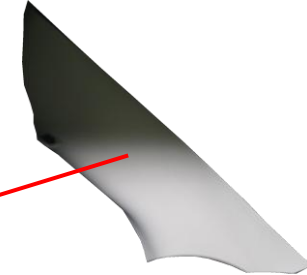
Installation (GPS Antenna Part)



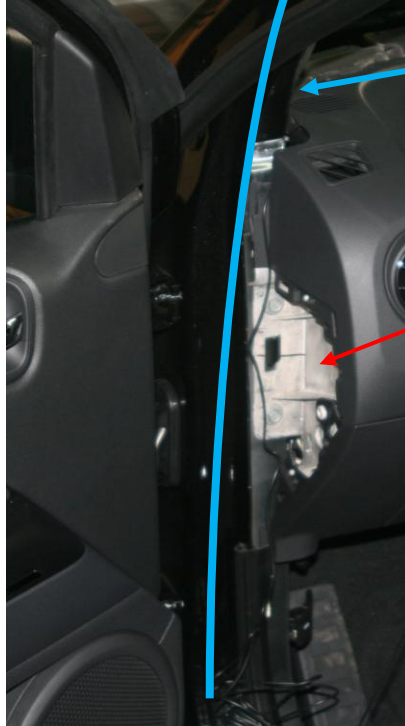
Remove the cover



GPS Antenna



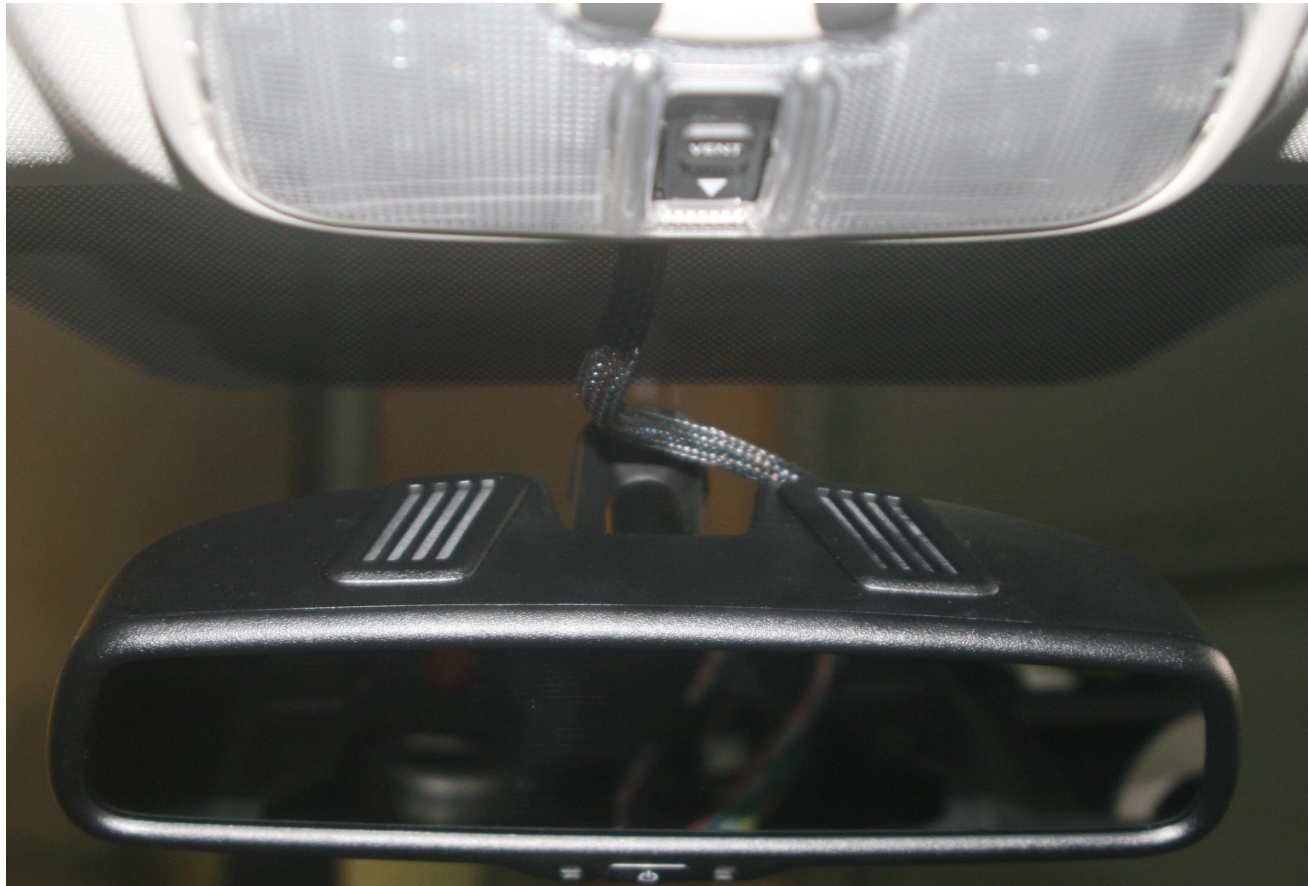
Remove the cover



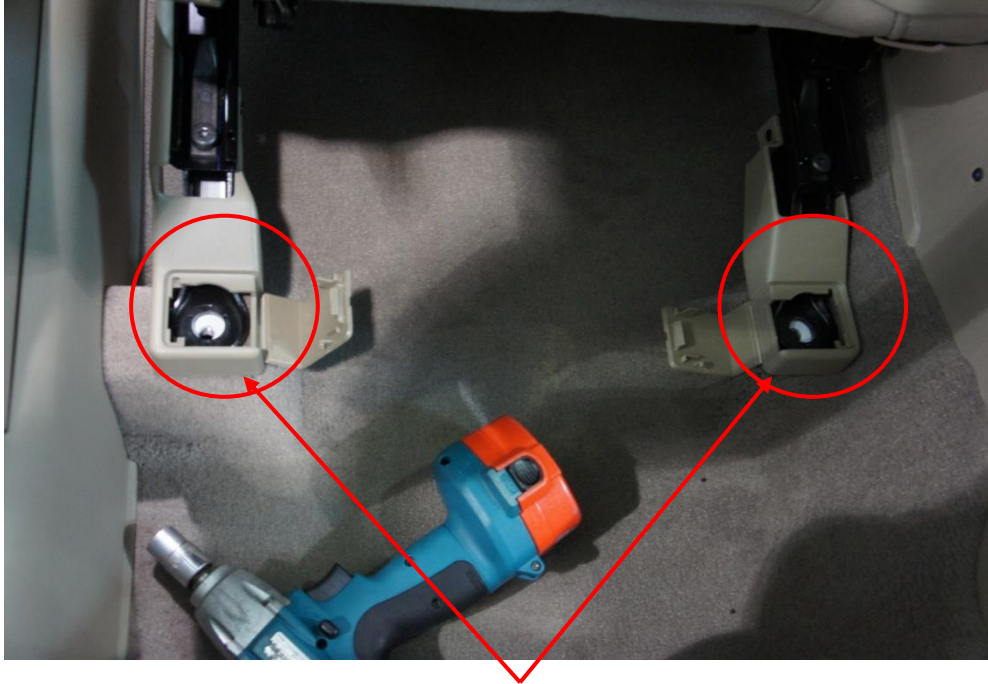
Remove the cover

GPS Antenna cable

Installation (DTV Antenna Part)



Installation (Navigation position Part)



Remove the bolt



Lift the seat.

Installation (Navigation position Part)

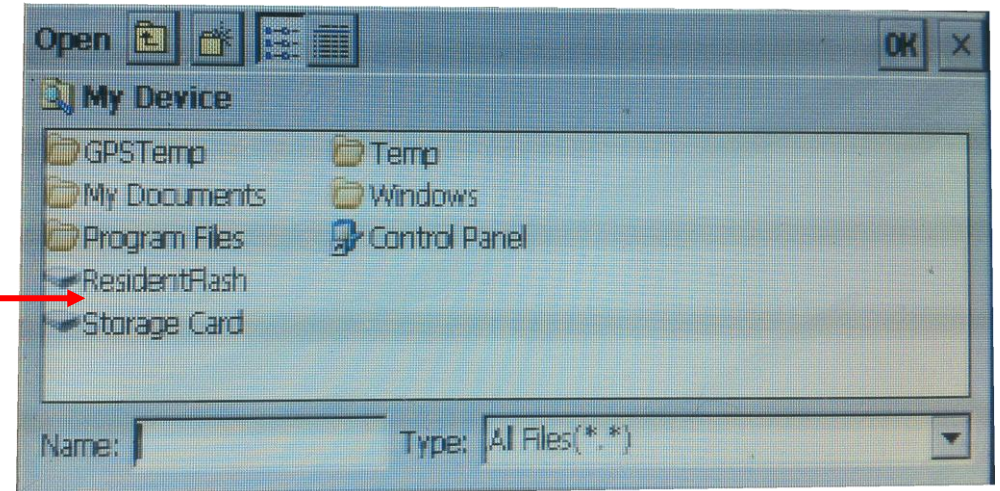


Installation (Navigation Touch Setting)



Push 5 second on Middle of Home screen, than change to touch setting screen

Installation (Navigation Map Setting)



Push  icon, than find "navi.exe"

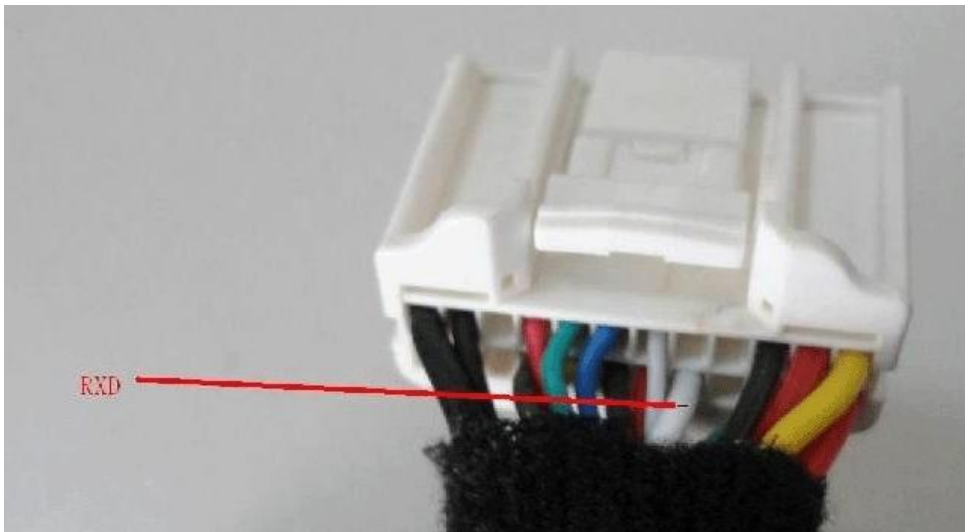
Installation (KD-900X GPS)

KD-900X GPS Setting

1) Dip S/W setting

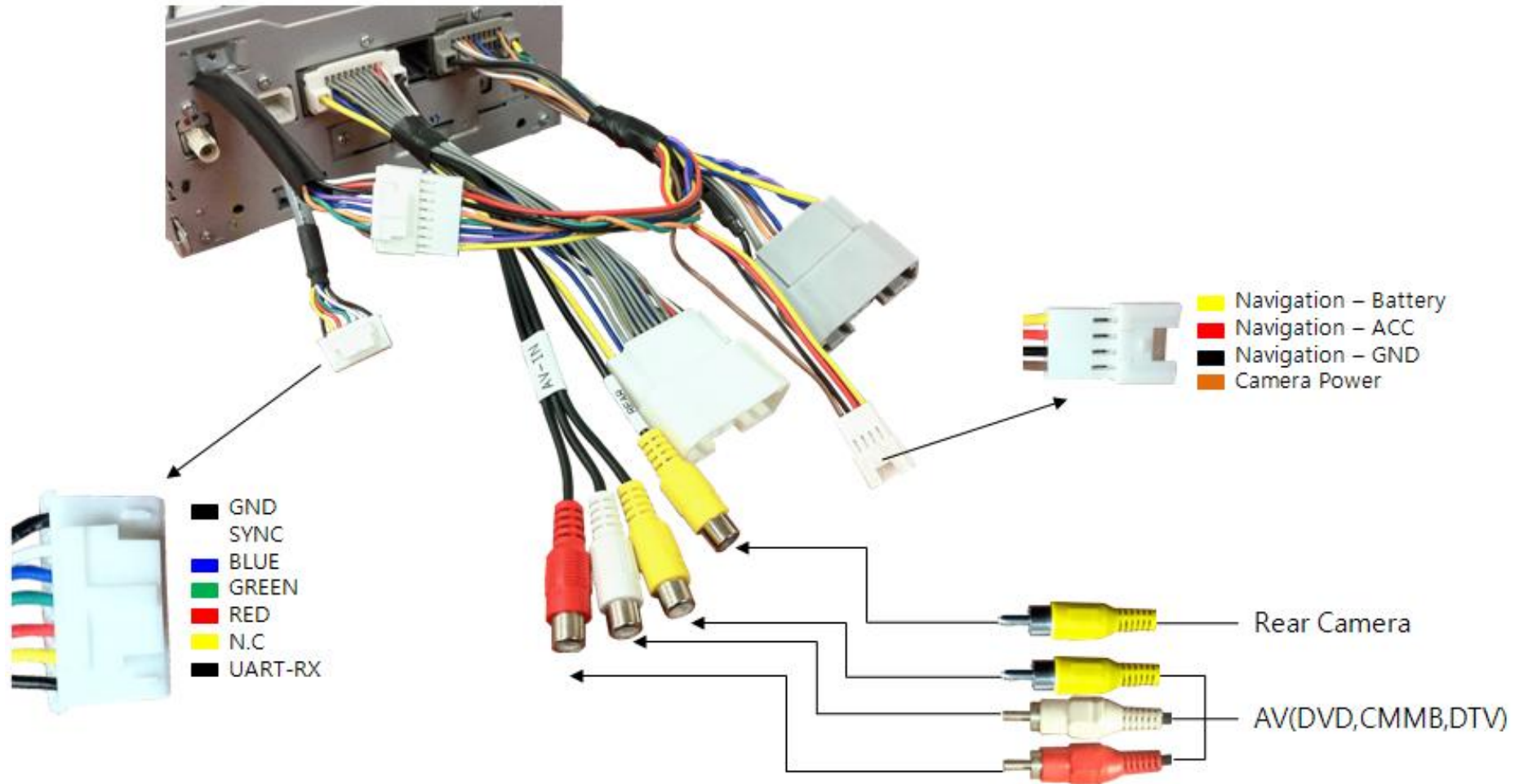


2) KD-900X GPS connection



※ UART-RX and RXD(KD900X) connection

Installation (Interface connection)

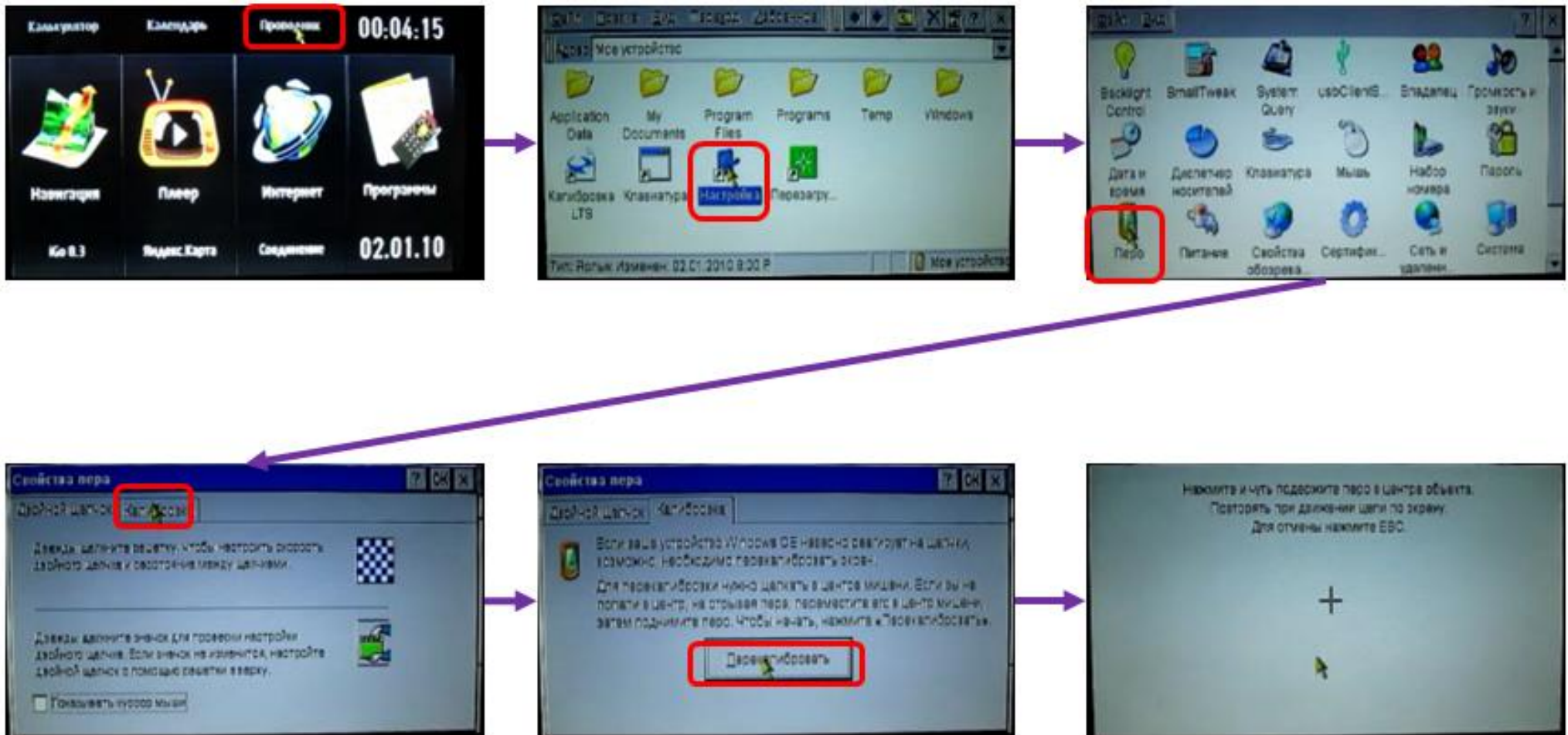


※ UART-RX and RXD(KD900X) connection

Installation (Only Russia)

KD-900X GPS Touch setting. (Only Russia)

<http://www.youtube.com/watch?v=pckCaZKxJ1M&feature=youtu.be>



Learning More, Support, and Feedback

For more information about Chrysler JEEP VES Room (2012) Interface
Please go to through www.auxxo.com

Or, Facebook: www.facebook.com/auxxo

AUXO welcomes your Feedback on Chrysler JEEP VES Room (2012)

To submit feedback, send us e-mail: webmaster@auxxo.com