

Table of Contents

1. Specifications	
1.1 Main Specifications	2
1.2 Features	3
1.3 System Diagram	4
1.4 Components	5
1.5 Exterior	7
2. Installation	
2.1 Installation Diagram	8
2.2 Replace LCD	9
2.3 Connecting CAN Wires	18
3. Settings	
3.1 DIP Switch	19
3.2 Remote Control	20
3.3 Car Model and Navi Model	21
3.4 Factory Mode	22
3.5 IR-MEMORY input	25
3.6 Original Button Usage	27
3.7 Rear Camera	28
3.8 Rear Parking Guidelines	29
3.9 OSD	30
4. Trouble Shooting	32

1. Specifications

1.1 Main Specifications

1. Car Compatibility

AUDI A3 2014~

2. Components

Interface* 1EA

3. MULTIMEDIA INTERFACE input specification

3 * A/V input (video external input)

1 * CVBS(Rear Camera) input

1 * Analog RGB input (Navigation system)

1 * LCD input (Car system input)

4. MULTIMEDIA INTERFACE output specification

1 * LCD output

5. Power specification

Input power : 8VDC ~ 18VDC

Consumed power : 3.5WATT

6. Switch input mode

- External display skip function : through DIP switch, can control each video input

- Through remote control, can change input mode

- Through CAN or rear lamp cable, rear camera can be detected

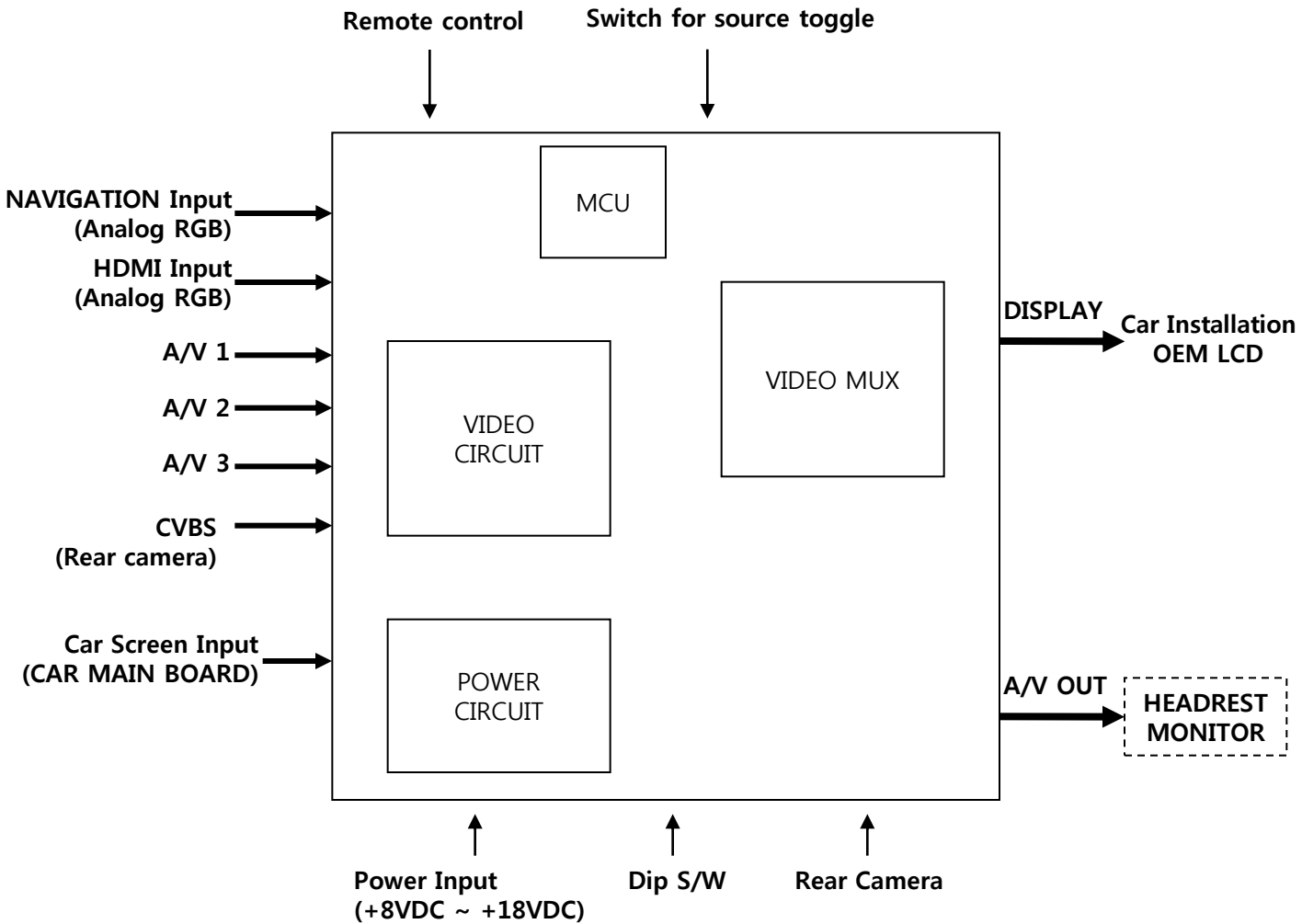
1. Specifications

1.2 Features

- Replace 5.8inch Low-Resolution with 7inch High-Resolution
- Able to adjust DVD, NAVI display on screen
- Improved Screen Display (user-oriented interface)
- Provide power cable to connect with rear camera
- Dynamic PAS(Parking assistance system), moving parking line according movement of steering wheel

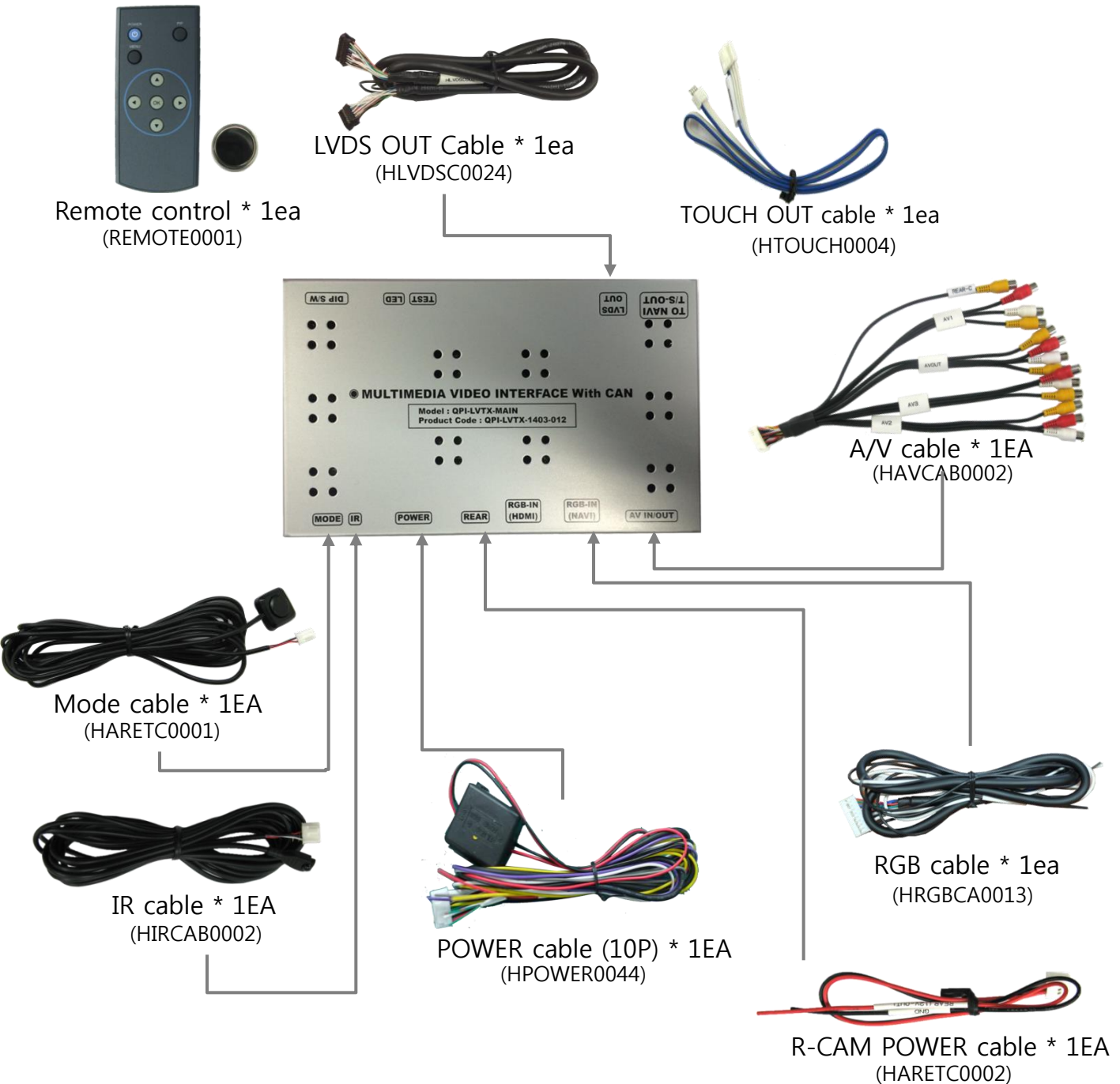
1. Specification

1.3 System Diagram



1. Specification

1.4 Components



1. Specification

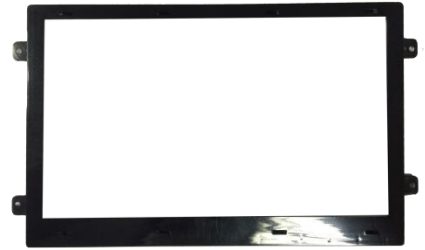
1.4 Components



LCD * 1ea
(LCDPAN0009)



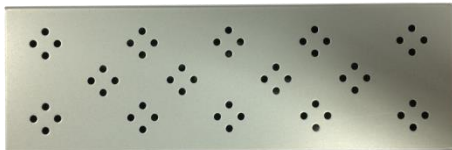
Touch Panel(TOUPAN0007) * 1ea



Finished material * 1ea
(MOLDIF0176)



FMNT Board(QCPASS0517) * 1ea



Original case * 6ea
(PRESET0182)



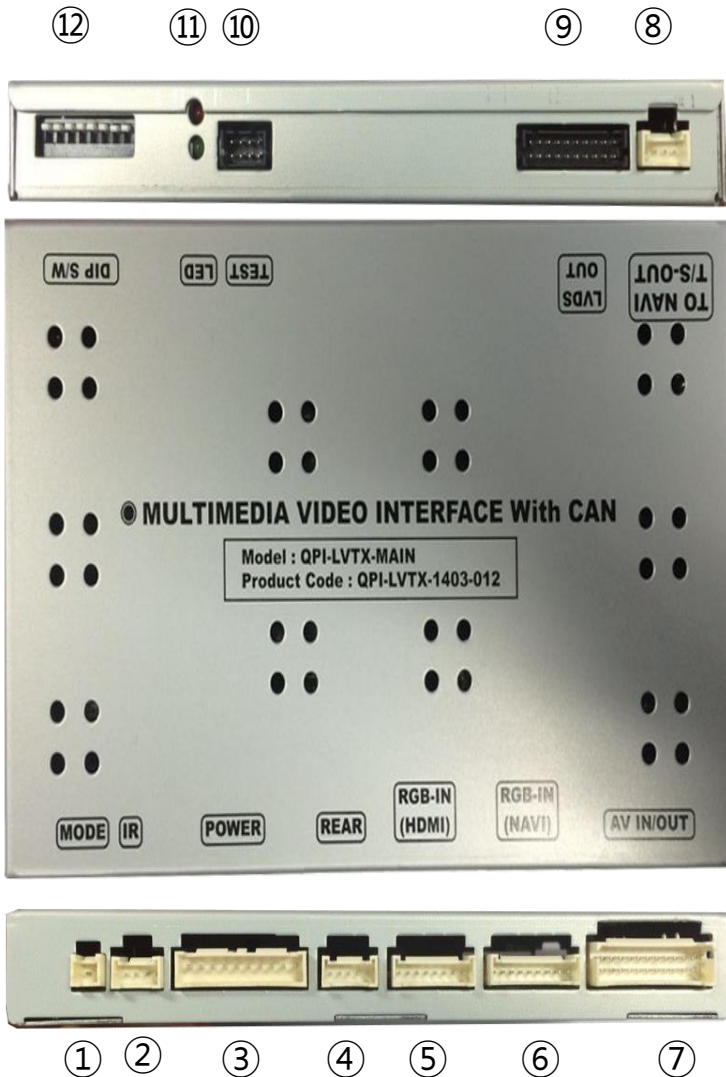
Screw * 6ea(SCREWS0007)



Screw * 6ea

1. Specifications

1.5 Exterior



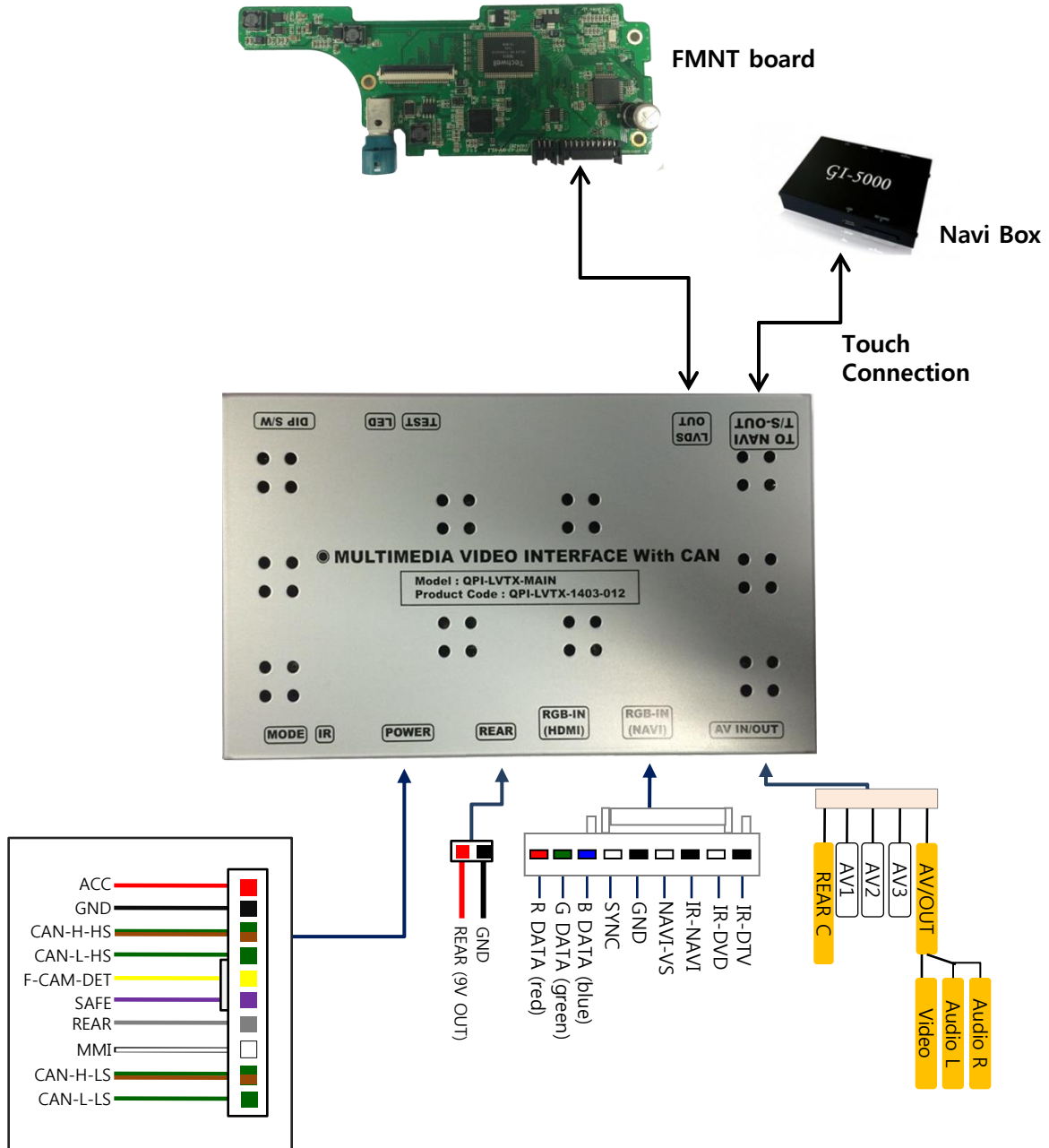
Dimension

Width 150.4mm
Length 99.4mm
Height 2.3.2mm

- ① MODE
- ② IR
- ③ POWER
- ④ REAR
- ⑤ HDMI
- ⑥ RGB-IN(NAVI)
- ⑦ AV IN/OUT
- ⑧ TO NAVI T/S-OUT
- ⑨ LVDS OUT
- ⑩ TEST
- ⑪ LED
- ⑫ DIP S/W

2. Installation

2.1 Installation Diagram



2. Installation

2.2 Replace LCD



- ① Dismantle the OEM monitor and loosen the volts.
- ② Take away the plastic molding part and loosen the volts.

2. Installation

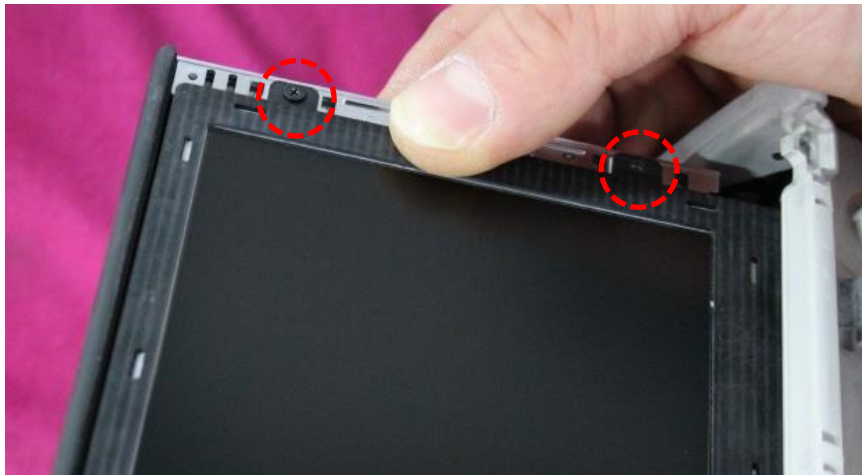
2.2 Replace LCD



- ① Take away Original LCD with a tool.
- ② Refer to above photos.

2. Installation

2.2 Replace LCD



① Assemble LCD and Fasten with supplied volts.

※ Pull the FPC cable of LCD under the bracket

2. Installation

2.2 Replace LCD



-
- ① Assemble separated plastic molding part.

2. Installation

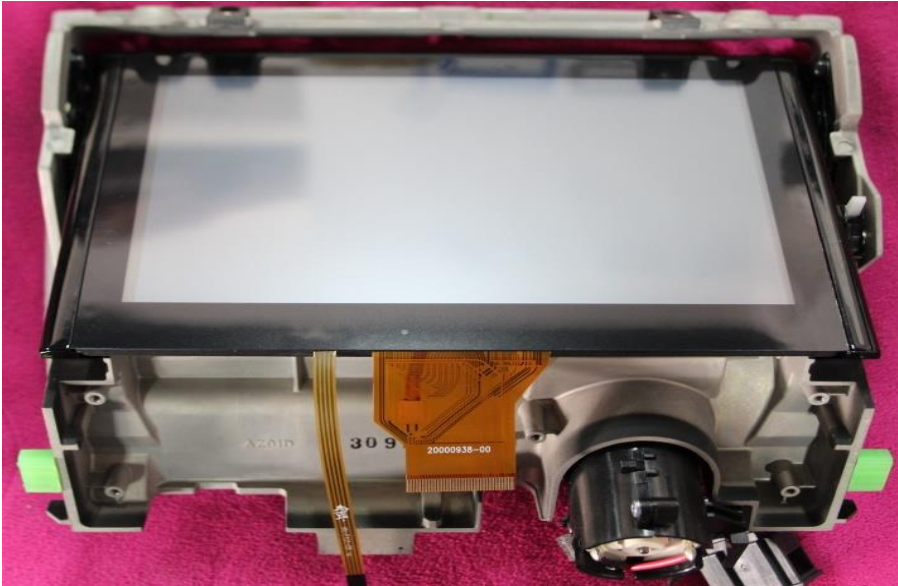
2.2 Replace LCD



-
- ① Attach supplied touch screen.
(Refer to above photos)

2. Installation

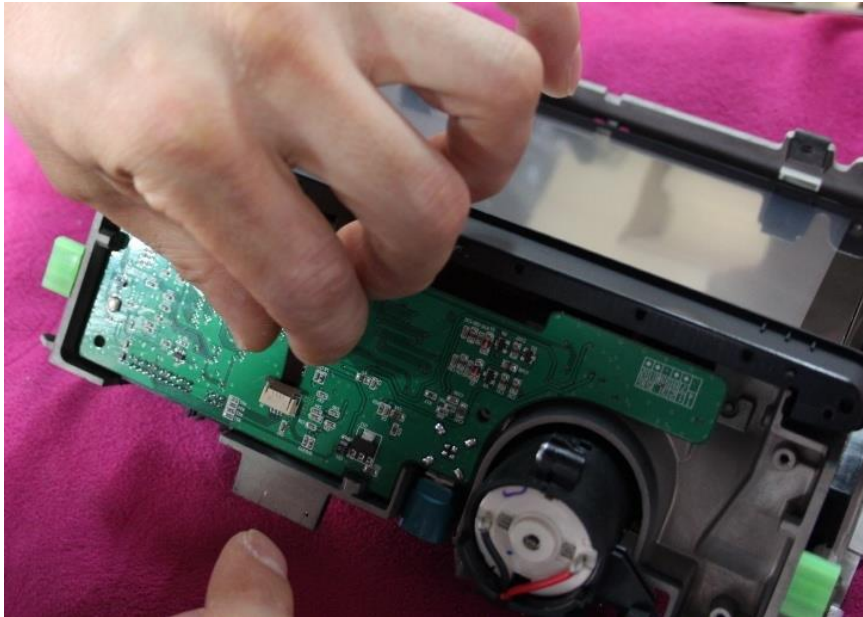
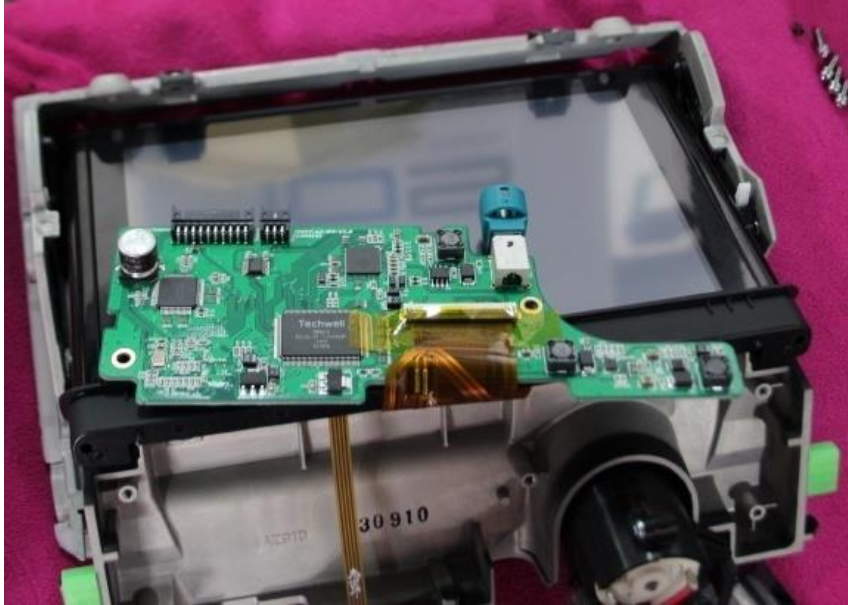
2.2 Replace LCD



- ① Assemble original bracket and put the FPC cable and touch cable under the bracket. (Refer to photos).

2. Installation

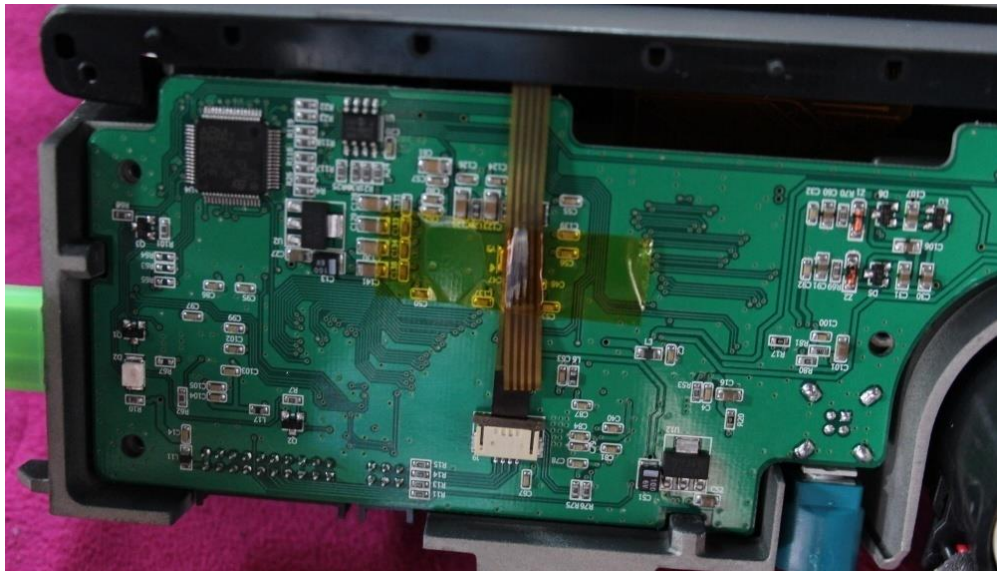
2.2 Replace LCD



- ① Connect the FPC cable to Sub-board.
Connect the Touch cable to opposite side of sub-board

2. Installation

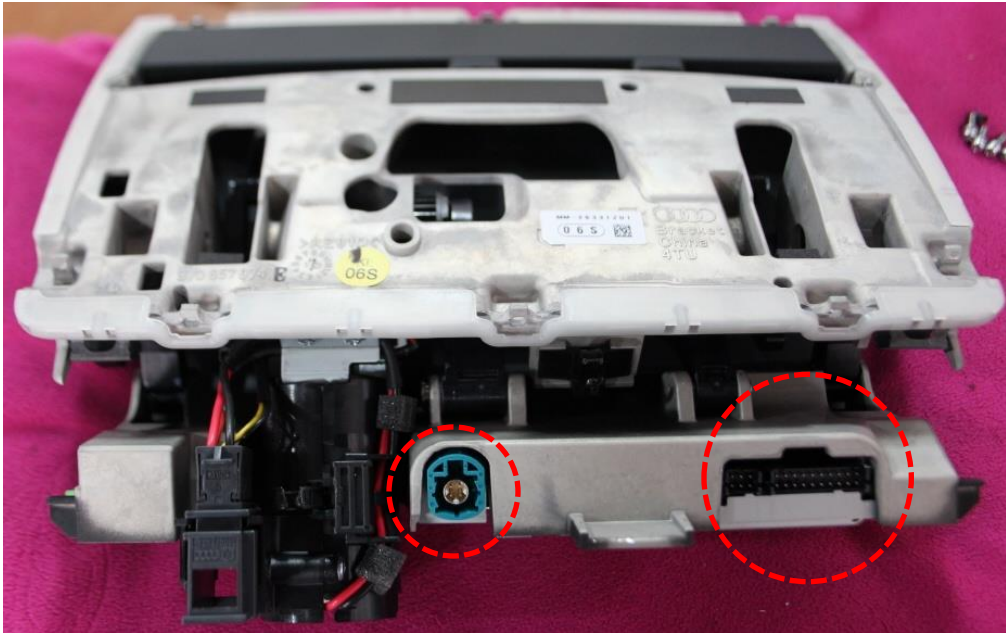
2.2 Replace LCD



- ① In case the touch cable is too long, you can fold the cable with a tape (Refer to above photos)
- ② Reassemble bracket located under the monitor.

2. Installation

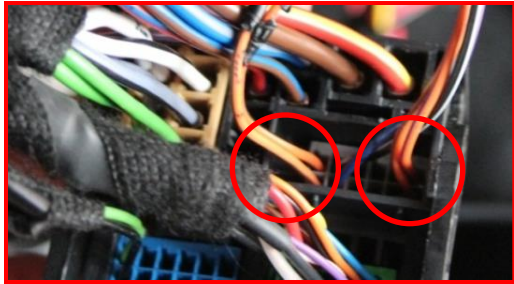
2.2 Replace LCD



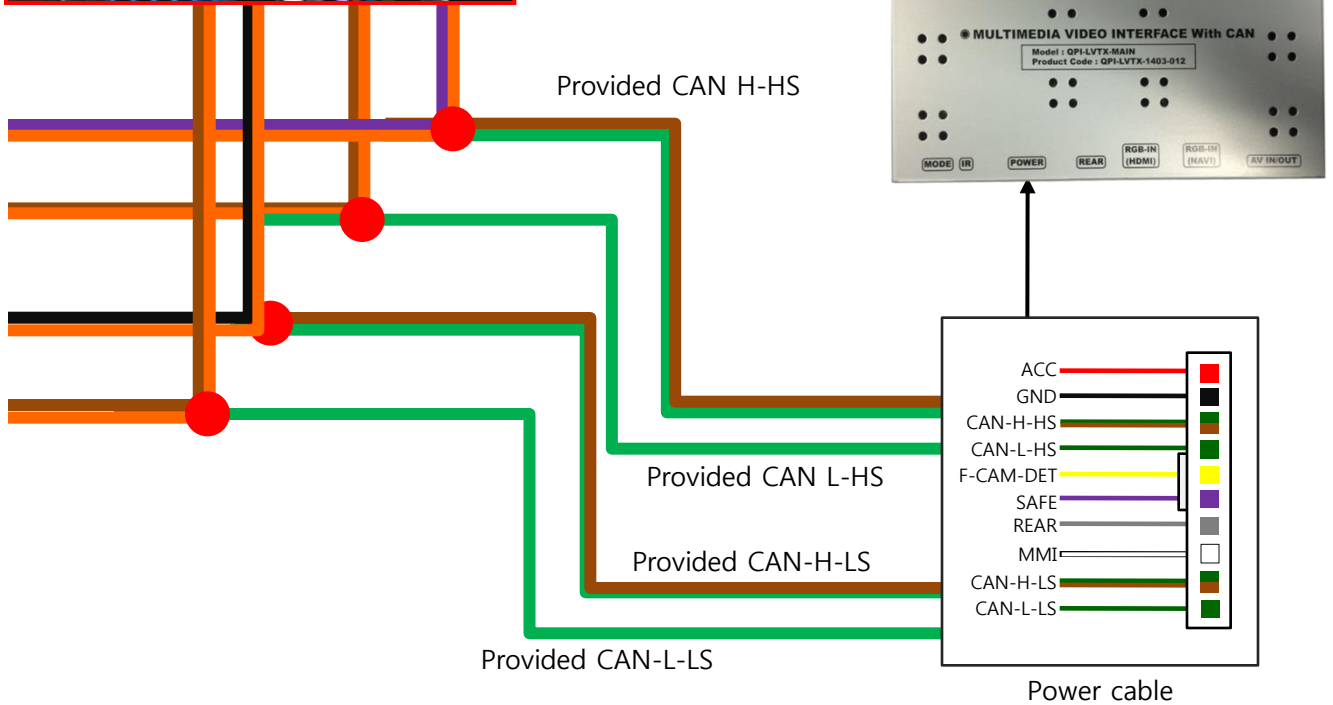
-
- ① After Assembly, you will be able to see two connectors.
 - ② Connect the left side round connector to original LCD Cable and
Connect the square connector to supplied LVDS cable.
- ※ Connect OEM cables to OEM board and put OEM board into supplied metal case to keep.

2. Installation

2.3 Connection of CAN Wires



Original Cable



You will be able to find OEM CAN Wires behind glove compartment of passenger seat.

Connect CAN High(Orange+Violet) to supplied CAN-H-HS(Green+Brown),
Connect CAN Low(Orange+Brown) to supplied CAN-H-HS(Green).

Connect CAN High(Orange+Black) to supplied CAN-H-LS(Green+Brown),
Connect CAN Low(Orange+Brown) to supplied CAN-L-LS(Green).

3. Settings

3.1 DIP Switch

- ※ Example DIP S/W usage
 - Use input mode : A/V2, A/V3
 - Use original navigation
 - External rear camera



※ ON : DOWN / OFF : UP
 Default : #8 OFF

- ▷ DIP S/W : 1,2 → ON (hide INPUT MODE)
- ▷ DIP S/W : 3 → OFF (A/V2 display)
- ▷ DIP S/W : 4 → OFF (A/V3 display)
- ▷ DIP S/W : 5 → ON (AUDI A3)
- ▷ DIP S/W : 6 → OFF
- ▷ DIP S/W : 7 → ON (Use external rear cam)
- ▷ DIP S/W : 8 → OFF

<i>PIN</i>	<i>Function</i>	<i>Dip S/W Selection</i>
1	Displaying RGB input	ON : RGB mode skip OFF : RGB mode display
2	Displaying A/V 1	ON : A/V 1 mode skip OFF : A/V1 mode display
3	Displaying A/V 2	ON : A/V 2 mode skip OFF : A/V2 mode display
4	Displaying A/V 3	ON : A/V 3 mode skip OFF : A/V3 mode display
5	Select monitor type	ON : 7inch High resolution OFF : 5.8inch low resolution
6		N.C
7	Setup of rear camera use	ON : CVBS4 OFF : MAIN
8	Select Delay time when mode is changed from rear mode	ON : 10sec Delay OFF : Default

※ Please make sure to disconnect the power cable of the interface and reconnect the power cable again to apply the dip switch setting whenever changing DIP switch. Otherwise, DIP switch setting will not be applied.

3. Settings

3.2 Remote Control



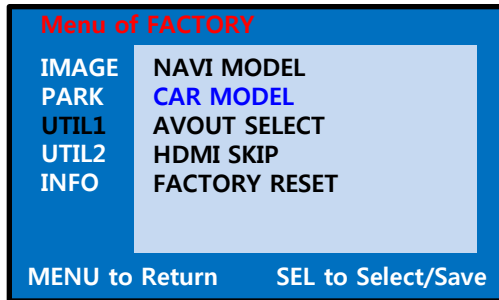
<i>Key</i>	<i>Function</i>
POWER	Unavailable
PIP	A/V 1~2 Mode : Remote control UI Display A/V 3 Mode : Mode switching UI Display
MENU	Activating OSD menu
OK	Making a selection, changing image display
▲	Moving upward
▼	Moving downward
◀	Moving leftward (If you press this button 2 seconds long, you can access the factory mode.)
▶	Moving rightward (If you press this button 2 seconds long, you can reset all the data about user environment.)

3. Setting

3.3 Car and navigation model

FACTORY mode – Press ◀ button 2 seconds long on the remote control.

▪ Setup for car model

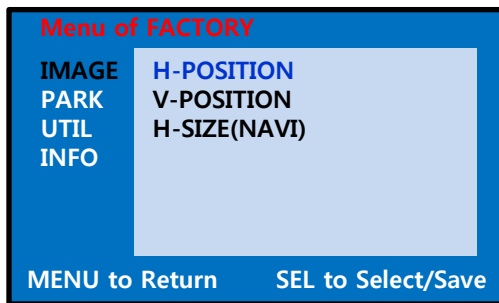


UTIL1 - CAR MODEL

Select the model of Car

A3

* **Select car model and Set up dip switch as per the size of monitor**



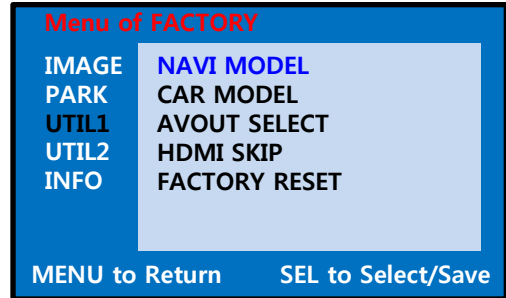
IMAGE

Adjust navigation position and size

H-POSITION : Move display horizontally

V-POSITION : Move display vertically

▪ Setup for navigation



UTIL1 – NAVI MODEL

Select Navi model

DEFAULT

NKP2100(WVGA)

PAPAGO(WVGA)

NAVIST OEM(WVGA)

GN-3000(WVGA)

ICUBE(WVGA)

NAV-506TP(WVGA)

MYVI(WVGA)

WP9200(WVGA)

HDMI(WVGA)

GI-8000N 3D(WVGA)

GI-5000A(WVGA)

A-CLASS(WVGA)

KD-900(WVGA)

PAPAGO(WQVGA)

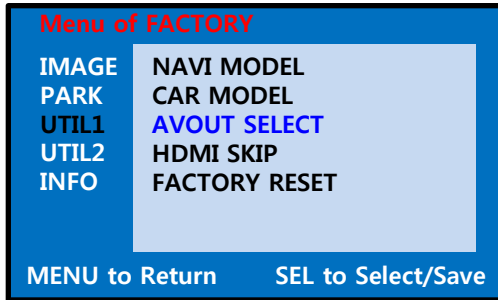
LS-901(WQVGA)

* **Set up the resolution of monitor and go to FACTORY/ IMAGE to set up the size and position of navigation.**

3. Setting

3.4 FACTORY Mode

FACTORY mode – Long Press ◀ button on the remote control.

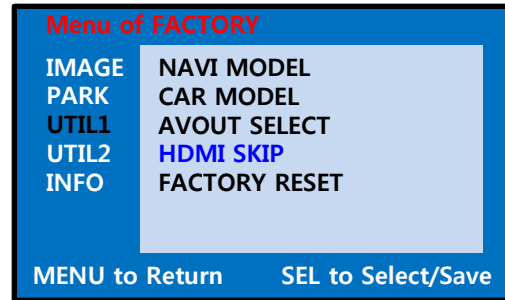


UTIL1 – AVOUT SELECT

Selecting background sound
After switching navigation or original mode

DEFAULT : Selecting AV sound which was played just before changing navigation or original mode from the AV mode

AV 1~3 : Sound of the selected AV source 1~3



UTIL1 – HDMI SKIP

Selecting whether to use HDMI function or not

ON(Not use) / OFF(use)



UTIL1 - FACTORY RESET

FACTORY MODE RESET

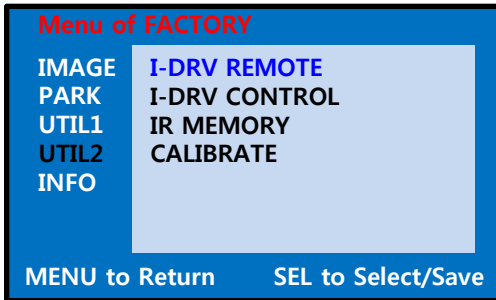
※ Same way and function to reset via long pressing

▶ Button on the remote control.

3. Setting

3.4 FACTORY Mode

FACTORY mode – Long Press ◀ button on the remote control.

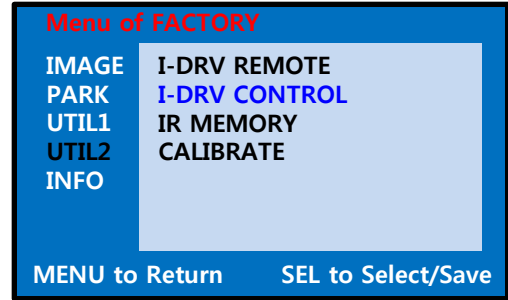


UTIL2 - I_DRV REMOTE

Choose DTV and DVD model to be control remote control image by touch

USER(when using IR MEMORY)

In AV 1 ~ 3 modes, you will see the image of remote control after connecting external devices and touch the screen.



UTIL2 - I_DRV CONTROL

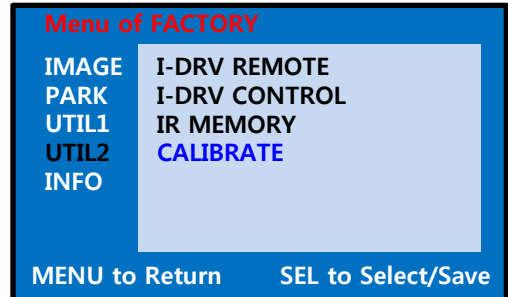
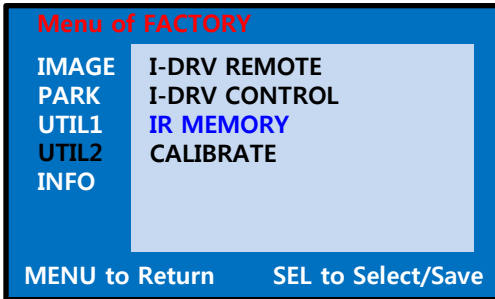
Selecting whether to use Remote control image by touch or not

ON / OFF

3. Setting

3.4 FACTORY Mode

FACTORY mode – Long Press ◀ button on the remote control.



UTIL2 – IR MEMORY

In order to control remote control image on screen, You need to register remote control values of DVD, DTV

※ To use this function, in UTIL2-I_DRV REMOTE select USER mode

DVD / DTV

It is required to synchronize the remote control signal with DVD,DTV IR cable.

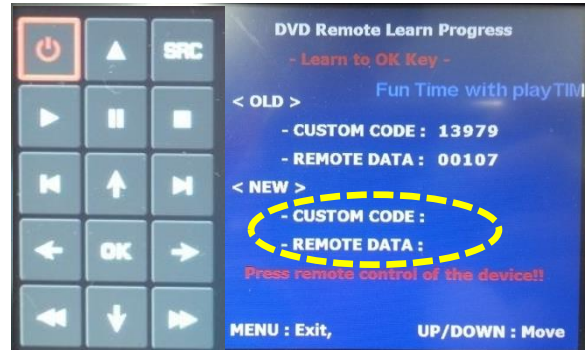
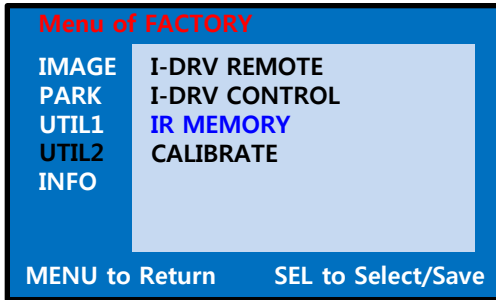
UTIL2 – CALIBRATE

Touch Calibration

YES / NO

3. Setting

3.5 DVD, DTV IR-MEMORY Input



- ① First of all, press ◀ button on remote controller 2 seconds long or press UP→DOWN→UP→MENU button in order to access Factory mode. Choose IR MEMORY on UTIL2.

In IR MEMORY, you can choose AV source of DTV and DVD you want to use.

- ② Picture above shows DVD remote control button value input, select menu you want to save. (To register DVD remote control button value, select IR MEMORY – DTV and follow below instructions.

Example)

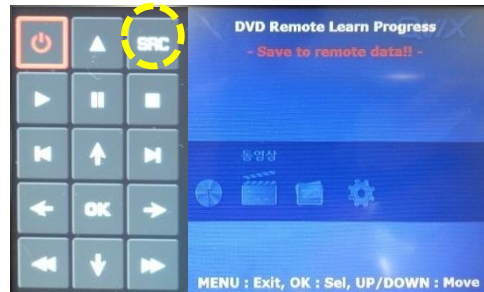
- a. After select OK button on OSD menu, press intended I-Drive button
- b. Indicated part above will flicker, and press POWER on DVD remote control. (continue to next page)

What is IR-MEMORY Mode?

Is to allow touch screen to control other DVD or DTV (besides the existing,; for example : SANYO, NECVOX) by register remote control value.

3. Setting

3.5 DVD, DTV IR-MEMORY Input



Instruction> continued...

c. The values that you registered will appear as green text in the marked area on pressing the button. And the values will be saved automatically.

d. Register remain buttons' value in OSD menu like the above-mentioned.

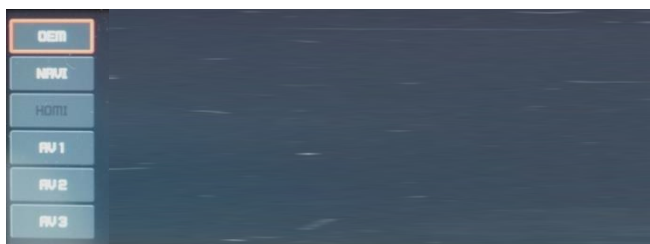
③ After register, select "SRC" button in OSD menu. Then you can see confirmation window as shown above. At the moment, (If data is saved, DVD TYPE and DTV TYPE will be changed to "USER" automatically.)

If you see "SUCCESS" on screen, the data is saved clearly and you can control DVD via touch screen. BUT, you MUST change the option in FACTORY-UTIL2-I_DRV REMOTE to "USER".

※ When touch the screen or Select PIP button in remote controller, you can control DVD, DTV using remote control UI via touch screen

※ DVD(A/V1), DTV(A/V2) mode, Can see remote control UI
HDMI, A/V3 mode, Can see mode switching UI

- If you want to see mode switching UI in DVD, DTV mode, Select "SRC" button



3. Setting

3.6 Original Button Usage

Press upward(NAV) : Switching Mode

(RGB→A/V1→A/V2→A/V3→Original)

Press downward(TEL) : Go to Original Screen

Press upward (RADIO) or downward (MEDIA)
: Go to Original Screen



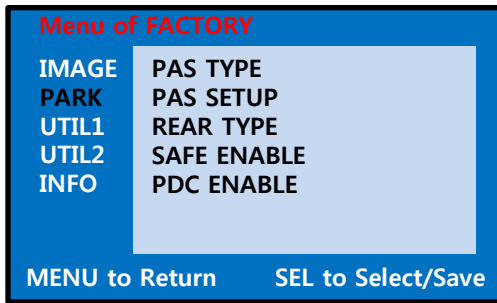
Short Press : Switch to OEM

3. Setting

3.7 Rear Camera

FACTORY mode – Press ◀ button 2 seconds long on the remote control.

※After installing rear camera : DIP S/W #7 must be put down (ON). Refer to page 9.



□ PARK

PAS TYPE : Selecting Type of parking guide line

- NOT USED : Not use Parking guide line
- PAS ON : Selecting Dynamic Parking guide line
- PAS OFF : Selecting fixed Parking guide line

PAS SETUP : Adjusting the position of the parking guide line (available in PARK SETUP-> V-POSITION, H-POSITION)

REAR TYPE : Choose rear camera recognition

* LAMP - Detecting the rear view camera via rear lamp (Installer must connect "Rear-C" cable of the power cable to the rear lamp of the car.)

*CAN - Detecting the rear view camera by CAN signal (Installer must connect "CAN" cable of the power cable to the "CAN" cable of the car.)

SAFE ENABLE : If your car is connected with CAN cable and it is in "ON" state, you can NOT watch DVD or A/V except original image or navigation while driving. At that time the screen get back to the main (default : OFF)

PDC ENABLE : When set the gear to "R", Display PDC (Default : ON)

a.If you want to get to the FACTORY mode, Shift in to reverse and press "LEFT" button 2 seconds long on the remote control or the keypad. (as shown left top)

3. Setting

3.8 Rear Parking Guidelines

Go to Factory Menu, choose PAS SETUP, by using OK button change H-POS → V-POS → TYPES

□ H-POS



In H-POSITION, use ◀, ▶ on remote control, to adjust parking guideline left and right.

□ V-POS



In V-POSITION use ▲, ▼ on remote control, to adjust parking guideline up and down.

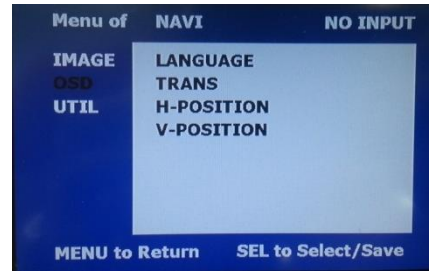
3. Setting

3.9 OSD (On Screen Display) / Analog RGB Mode



□ IMAGE

- * BRIGHTNESS
- * CONTRAST
- * SHARPNESS



□ OSD

- * LANGUAGE : Set OSD language (only support English and Chinese)
- * TRANS : Adjust OSD transparency
- * H-POSITION : Move OSD horizontally
- * V-POSITION : Move OSD vertically



□ UTIL

- * FACTORY RESET
: Factory reset only for OSD function (unable reset video position)

3. Setting

3.9 OSD (On Screen Display) / Video Mode



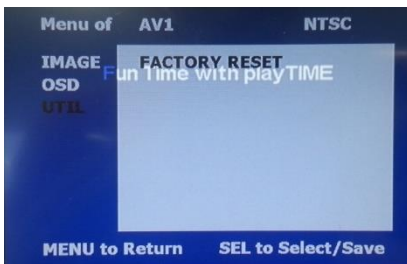
□ IMAGE

- * BRIGHTNESS
- * CONTRAST
- * SATURATION
- * HUE
- * SHARPNESS



□ OSD

- * LANGUAGE : Set OSD language (only support English and Chinese)
- * TRANS : Adjust OSD transparency
- * H_POSITION : Move OSD horizontally
- * V_POSITION : Move OSD vertically



□ UTIL

- * FACTORY RESET
: Factory reset only for OSD function (unable reset video position)

4. Trouble Shooting

Q. I cannot change mode

- A. Check connection of Ground cable and IR Cable.
Check LED lamp is on, if not check connection of POWER cable.

Q. All I got on the screen is black.

- A. Check second LED lamp of the interface is on, if not, check A/V sources connected are working well.
(Second lamp indicates AV sources connected works well.) Check interface connection has been done well.

Q. Displayed image color is not proper (too dark or unsuitable color)

- A. Try to select "INITIAL" in OSD menu, if it does not work, inform to manufacturer.

Q. I cannot watch the rear camera on the screen

- A. Set the DIP switch #7 as state "ON".

Q. Set mode not appear

- A. Check DIP Switch.

Q. OEM image is not displayed.

- A. Check interface's LCD In/Out cable connection. If the status keeps on, inform to manufacturer.

Q. Screen only displays white color.

- A. Check LCD out cable is connected well, if this status keeps, inform to manufacturer.

Q. Show PIP function via handle button, and original screen appear half only.

- A. This is not because of faulty interface, please check original monitor split function settings.

Q. After connect CAN cable, set gear "P", video doesn't appear.

- A. Go to "FACTORY MODE" and check "UTIL-Rear Select". Change "LAMP" settings to "CAN" with remote control.
※ LAMP : In case of connecting "Rear-C" wire of Power Cable to Rear Lamp in vehicle.
It may not work on a camera running 12V