

## **Smart link navigation & Driving recorder**



**User's Manual**

**Thank you for purchasing our products, before you use the unit, please read the instructions.**

### **Precautions**

- 1、 Don't expose the unit in humid、 dusty、 steam、 lampblack、 sunlight or other related severe environment.
- 2、 Please do not use diluent or other chemical cleaner、 but use soft cloth to clean the unit.
- 3、 The unit should be far away from overheating and under cooled places, keep the storage temperature at  $-30^{\circ}\text{C}\sim 80^{\circ}\text{C}$ , operating temperature at  $-20^{\circ}\text{C}\sim 70^{\circ}\text{C}$ .
- 4、 Please do not drop or strike the unit.
- 5、 Power supply: DC 9V~28V 2 A
- 6、 Please do not attempt to repair the unit by yourself, if you have any problems, please turn off the power and stop use and notify your local retailer. This unit has precision electronic components , non-specialist disassemble or repair will probably damage the unit.

### **Main functions & Parameters**

- 7 inch digital panel (800\*RGB\*480)
- 1080P HD Cycle recorder
- 170° wide-angle lens,12 million pixels
- Video resolution : 1920\*1080P Video Format : MOV
- Gravity sensor built in, Protect important recording date
- Support 32G TF card
- Built in 5.8G WiFi module
- Smart Link achieve the same screen with smart phone navigation
- Download "Smart Link" APP software via smart phone, when under navigation status, it has Caller ID display & Navigation calling-hidden function, can keep to be navigation interface when answer the phone calls ( this function is only for Android smart phone )
- "Smart Link" the same screen's function can share smart phone resources except navigation projection, such as: watching movies, playing games, image browsing, listening to music, all kinds of APP ect...
- Smart Link also can WiFi display smart phone' s music, movie to the unit without same screen.
- Rear parking: automatic switch rear view camera achieve safety parking.
- OSD Language: Chinese/English/Japanese/German/Spanish and other 13 kinds of languages
- Auto Switch synchronize with car turn on/ off
- Built-in 2W Hi-Fi speaker
- Adapt to all of various types cars

## 1. 1080P Full HD Driving Recorder



1) 170° wide-angle lens , 12 million pixels, 1080P full HD video.



12 Million Pixels



12 Million HD imaging, imported all-glass lens, using A grade glass material, 170° wide-angle lens can be achieved. F1.4 Moire constant aperture create a top recording in this field.

2) Using WDR wide dynamic recording technology not only well suppress glare and backlit reflection, but also adjust dynamically and balance the picture exposure, enhanced picture clarity and improve vision video at night.



3) Gravity sensor



## Gravity sensor

build-in G-sensor device, when vehicle collision by gravity, the system will start video-recording and lock save, the locked video will not be covered or cancel



#### 4) Motion detection

## Motion Detection



When this function is activated, the system detects in front moving objects , It will automatically start recording does not overwrite.



5) 7 inch digital screen enhance visualization effectively, the best installation position to avoid the driver sight's moving so much, effectively ensuring traffic safety. 7 inch screen provide clear picture, easy see navigation and reversing, video playback, no need insert or pull TF card often.





## 2. Smart Link Navigation

Smart Link achieve the same screen with smart phone navigation



Smart link navigation



### Screen mirroring Function

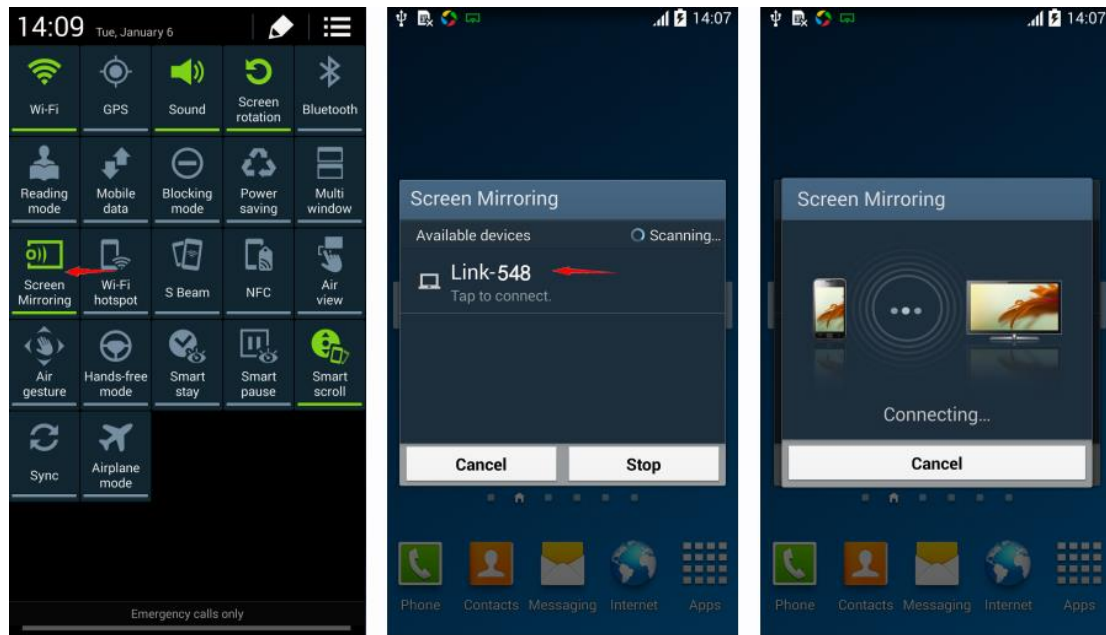
**NOTE:** Your mobile phone must support screen mirroring function. Different brands mobile phone has different name, such as iPhone's "AirPlay", Samsung's "Screen



Mirroring” and other “wireless display”, “wireless same screen” etc...

**Smart Link screen mirroring function usage:**

Android :mobile phone need enter Settings Menu, turn on the screen mirroring function (such as: Samsung 's Screen Mirroring) to connect the unit, then you can turn on the navigation App to same screen navigate.



IOS :Turn on WiFi and connect with the unit , turn on AirPlay and mirroring , then you can turn on the navigation App to same screen navigate.

**NOTE:** On screen mirroring situation, the unit and phone are shown same screen, so please don't turn down mobile phone screen.



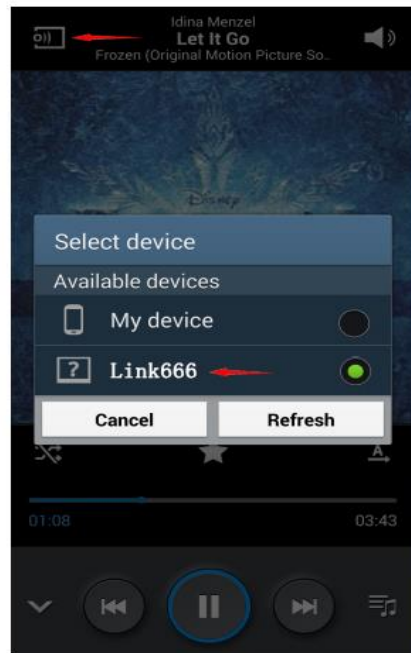
### 3. Smart Link WiFi Display Function

Smart link WiFi display can achieve audio and video resources from smart phone, you can enjoy bigger screen. At the same time, the FM transmitter can transmit music to car audio system, makes you enjoy the Hi-Fi sound in the car.



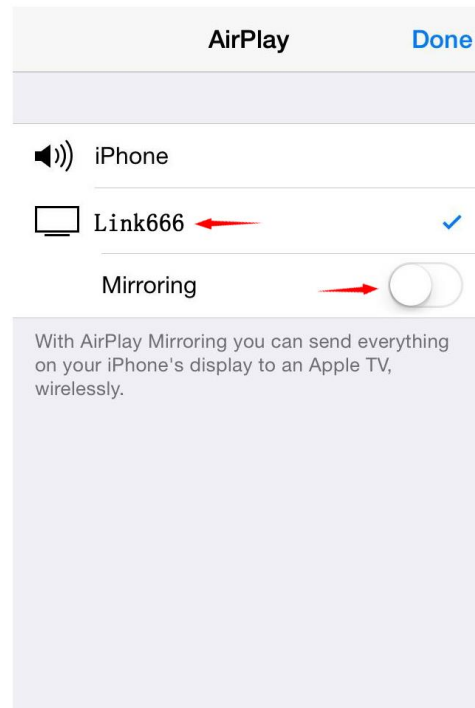
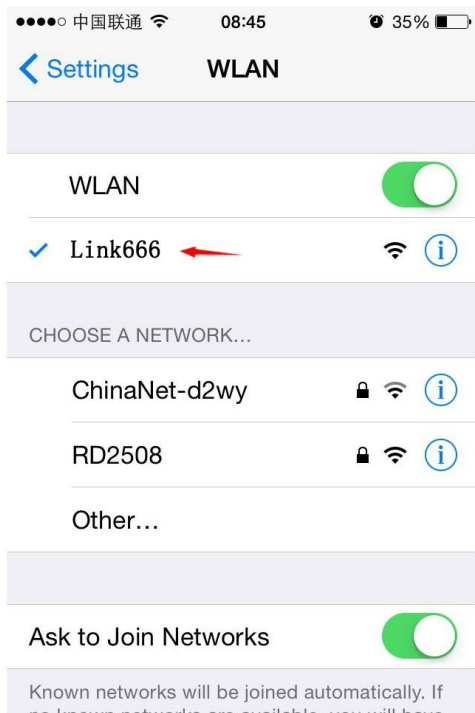
**Smart Link WiFi display function usage:**

**Android** : turn on WiFi and connect the device first, open audio or video player and choose " Link \*\*\* ", the music and movie can be transmitted to the unit .

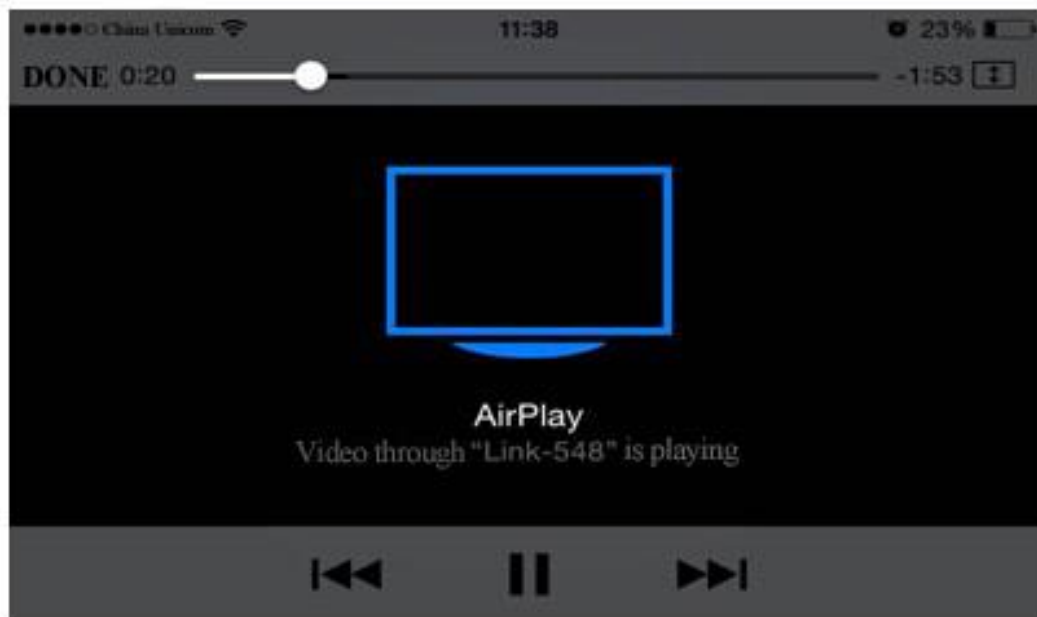


**IOS :** Turn on WiFi and connect the device , turn on Air Play but mirroring must be off, the music or movies can be transmitted to the unit.

**NOTE:** On WiFi display function, mobile phone and the unit are not same screen, the mobile phone use is not affected.



AirPlay:



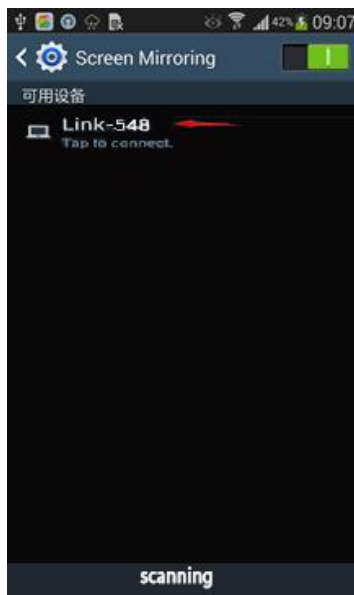
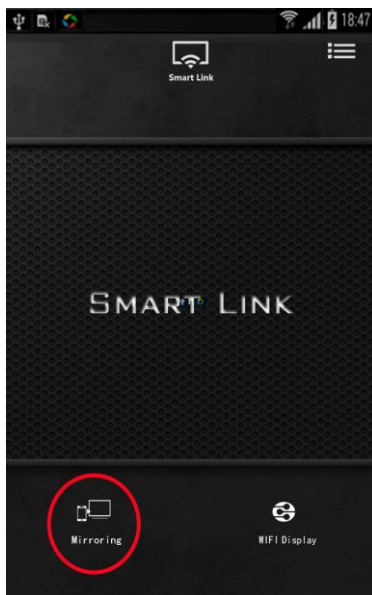
4. **“Smart Link” APP is an application software we developed for Android phone specially, bring a great convenience for user to use GR-7 all kinds of function, and promote learn products through practice. This software is only apply for smart phone with Android system, you can download it through TENCENT Application of treasure platform, loading method is the following:**

- a. Install Tencent Application of treasure via your phone
- b. Search “Smart Link” at Tencent Application of treasure, download and install

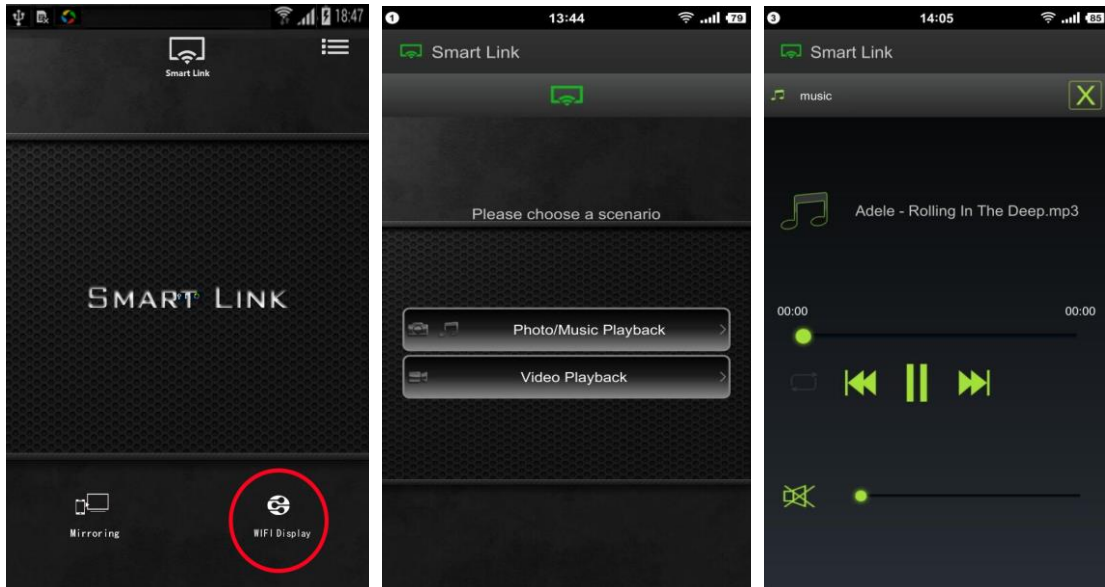
1). Open “Smart Link” App, enter mobile phone interconnection interface, click “Mirroring” or “WIFI display” to achieve same screen or WiFi display function:



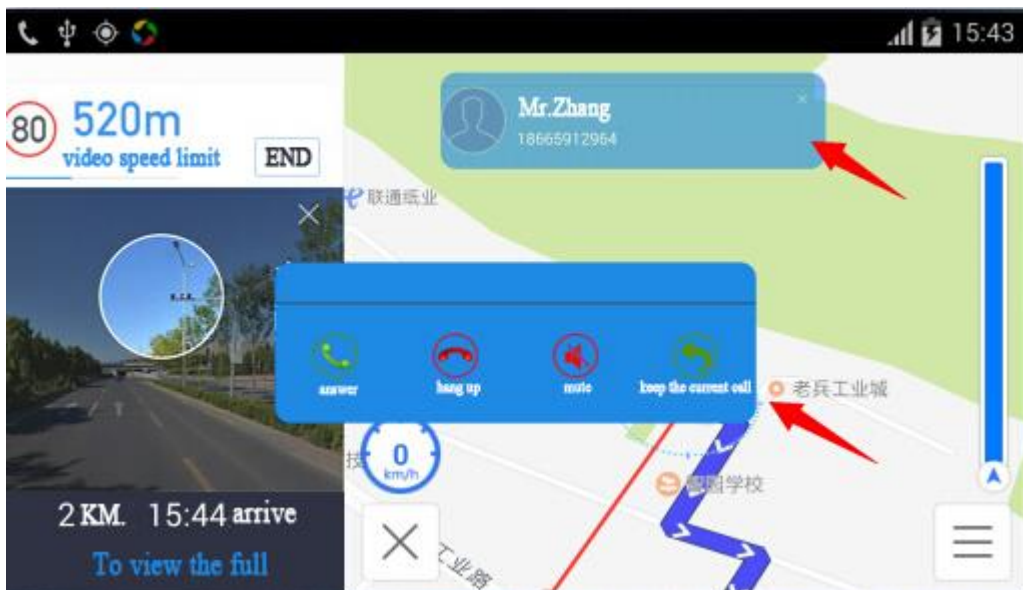
**a). Screen mirroring function**



**b). WiFi Display function**



- 2) Using GR-7 through “ smart link ” APP, under navigation status, have caller ID display and navigation calling-hidden function, when they answering a call, it is convenient for user without missing important road traffic information ( during an answer a call keep navigation interface )



## 5. FM Transmitter





FM transmit the music to the car audio system, makes you enjoy the Hi-Fi sound in the car.



**FM Usage:** In the Smart Link channel press "Up" key, when the volume be maximum, Press "Up" button each time will switch FM frequency: FM87.7 FM88.9 FM89.3... When turn on FM, this unit speakers mute automatically , adjust the car radio FM to the same frequency, you can enjoy mobile phone music from car audio system.

1). **The speaker volume diagram**



2). FM frequency diagram ( FM turn on, speaker mute automatically )



## 6. Rear view

Connect with rearview camera, automatic switch when reversing.



#### **Important Notification of installing rearview Camera:**

1. Suggest to go to car shop to finish installing, due to some more cumbersome on installation and wiring
2. Wiring methods are different because of the different car type
3. Suggest to install relay
  - 1) Some car types of German and American's car, after the engine started, the output voltage interferes too heavy that superposite pulse signal on the reversing lamp supply electricity, and will appear interference if rearview camera get power supply from the reversing lamp directly, the picture will shake, even don't switch to the reversing image .
  - 2) Part car type exist circuit checking sensor, the trip computer will limit the loading of reversing lamp route. rearview camera can't working normally that cause master units in black or white screen.
4. Relay installation method  
Relay is connected in series between storage battery's positive pole and rearview camera's positive pole

#### **7. Smart Link screen mirroring for entertainment**

Smart Link achieve the same screen with your phone ,share all smart phone resources: watching movies, playing games, image browsing, listening to music...

### 1. Play game

Turn on the game APP which you want to play, the game screen and sound are transmitted to master, the phone becomes your game pad, enjoy all kinds of 3D games.

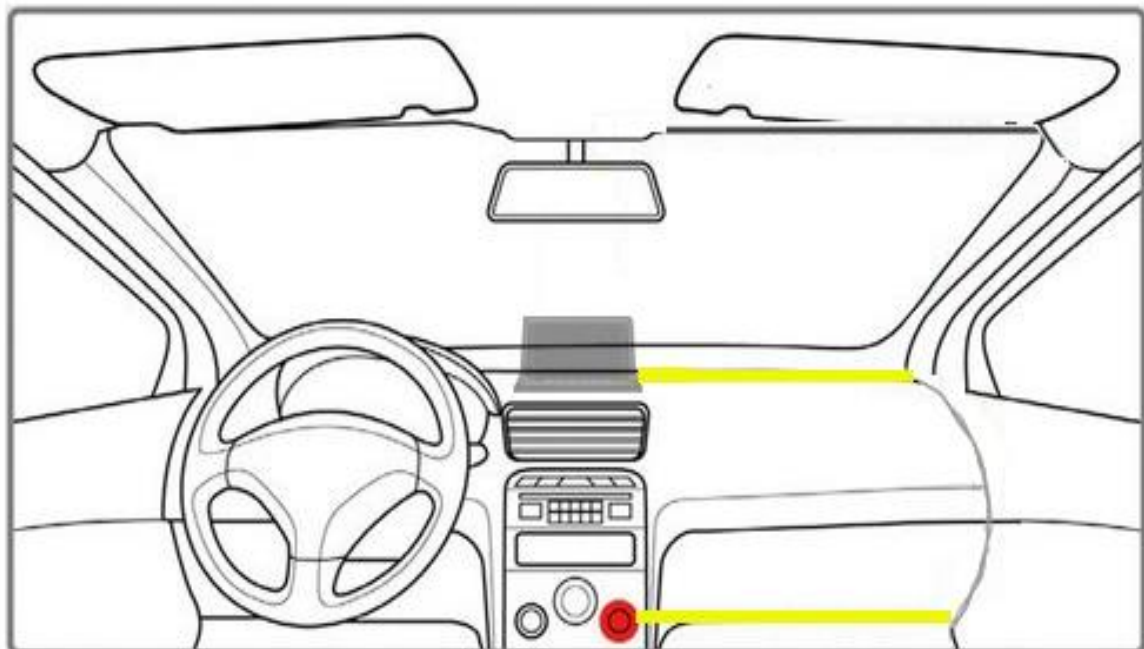
### 2. HD video transmission

Select the movies, music, e-books or the Internet surf via your phone, you no longer tangle the too small screen of your phone .

## 8. Accessories:

- Main master 1pcs
- Power cable 1pcs
- Cigarette lighter 1pcs
- User Manual 1pcs
- 3M glue 1pairs
- Parking camera 1pcs ( optional )
- AV wire for parking 1pcs ( optional )
- Screw for parking camera 2pcs (optional )

## 9. Installation Instruction



- 1) Connect the power cable, Wiring the power cable along the gap between dashboard and windshield .
- 2) Power cable connect with the cigarette lighter adapter DC plug, and then into the car

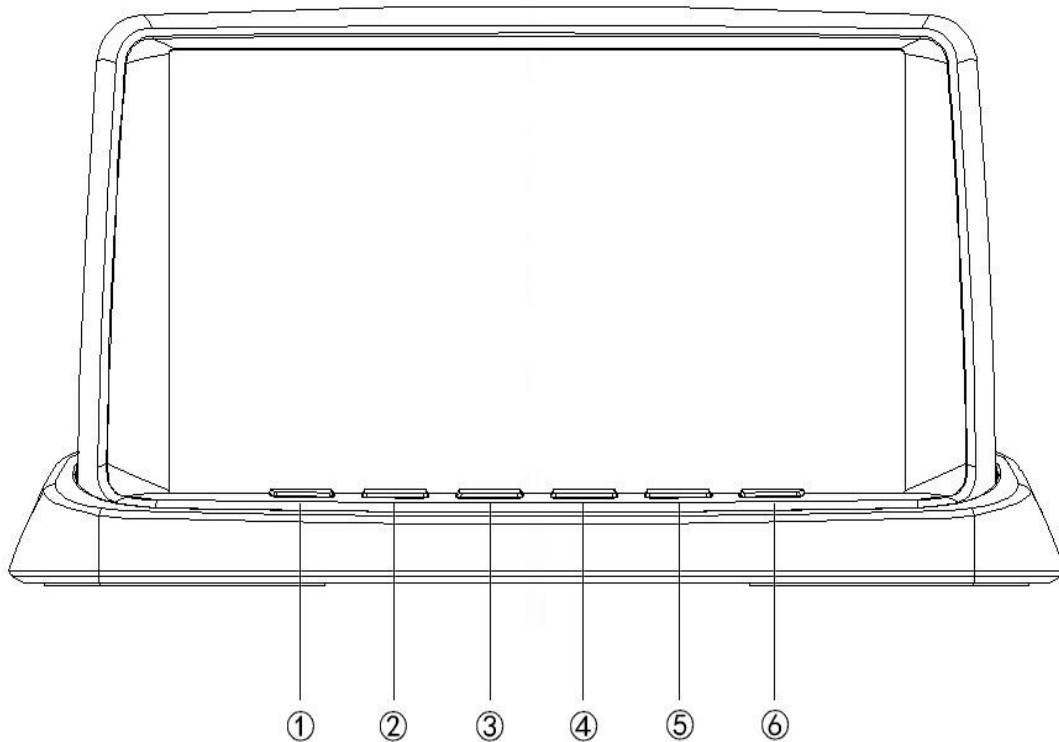
cigarette lighter socket

- 3) The cigarette lighter adapter with 5V 1.5A USB phone charging port, won't support other high-power devices.
- 4) Some car ignition switch can not control cigarette lighter, but you can use the cigarette lighter on/off button

## 10. Kindly reminder:

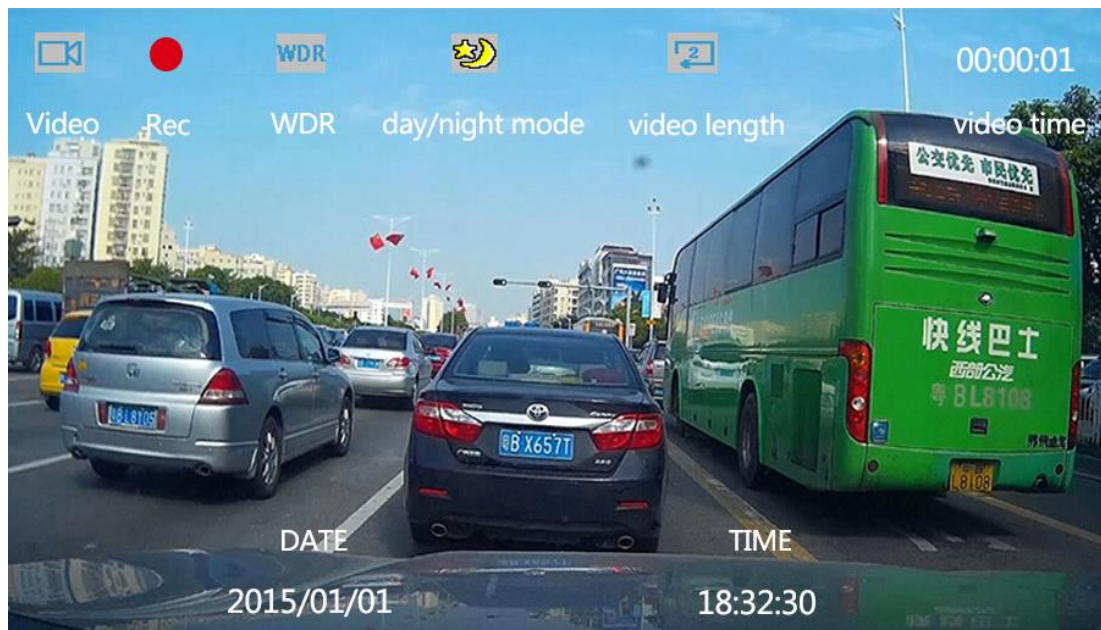
1). Button define:

when power on, please enter the setting menu to set time and date, the first use of suggest to format TF card.



- ① Power / Day and night mode (Press long is power ON/OFF, press short is day and night mode switch)
- ② Smart Link Function
- ③ Settings
- ④ Down (press long is the camera and video playback mode switch, press short is menu direction down)
- ⑤ Up (Press long is the camera and video playback mode switch, press short is menu direction up)
- ⑥ Recorder ON/OFF

## 2). Recording video interface



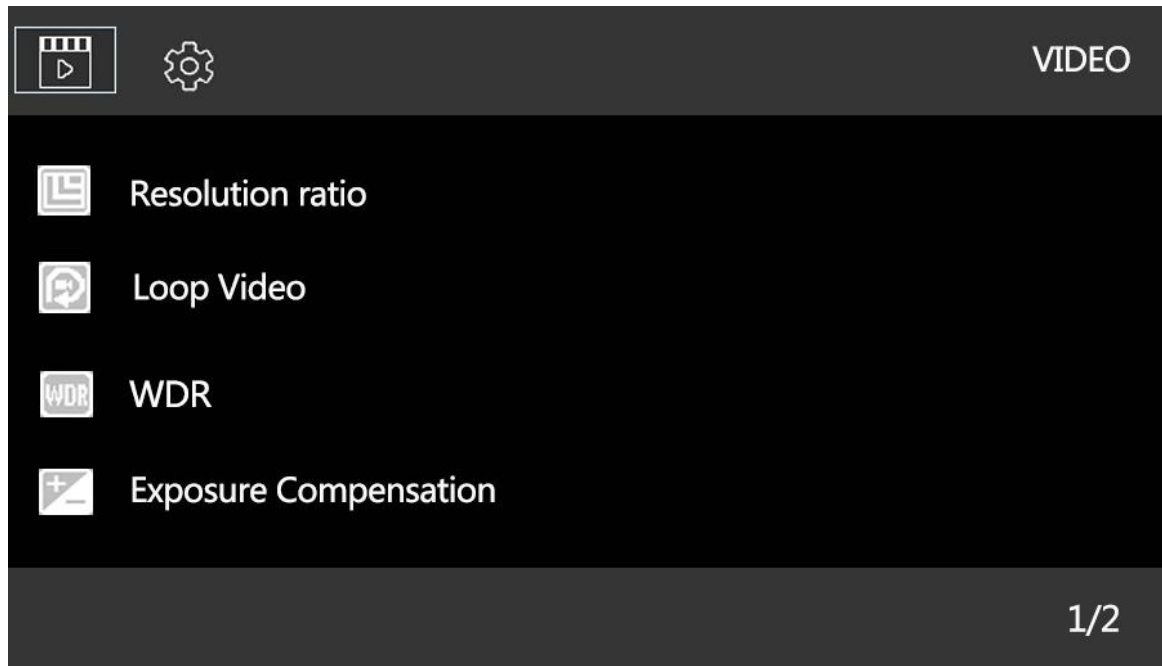
## 3). Smart Link interface



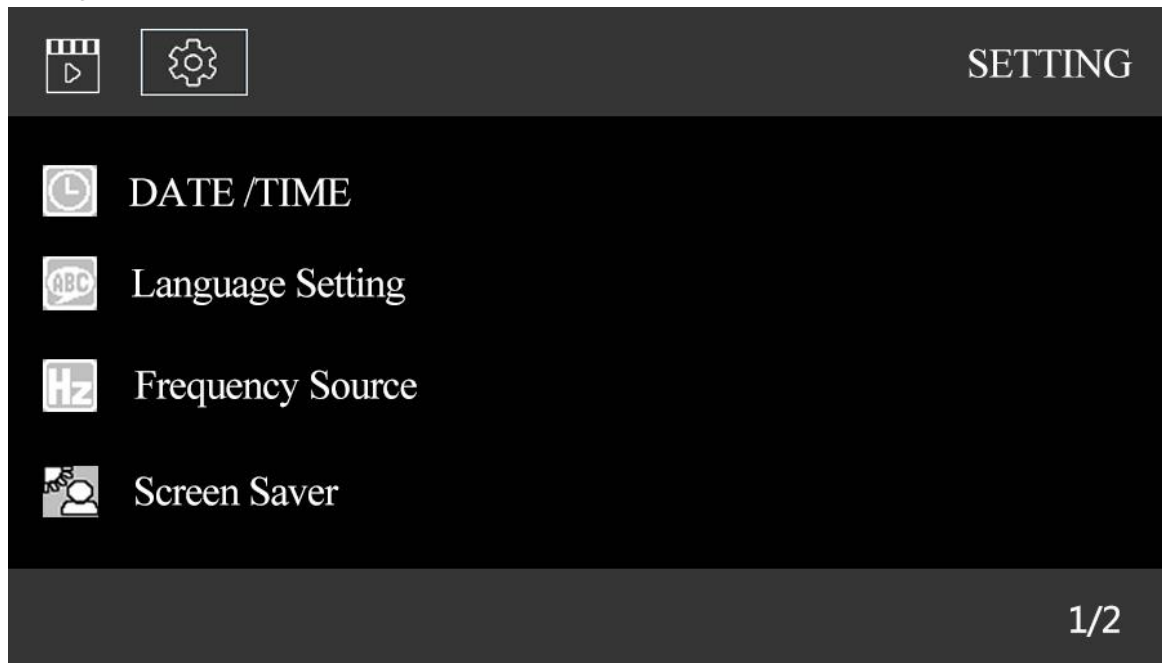
## 4). Setting

Press "OK" button to stop recording, press " setting" to enter recording video interface. Press " UP" and " DOWN" function keys are menu selection from top to the bottom.





5). Press "OK" button to stop recording, two times press "setting" continuity, enter system setting interface.



**6). Photo / Video playback**

In the video interface, press "OK" key to stop recording, longer press 2 seconds "UP" or "DOWN" key to be the playback switching of photography & video.

**Photo pattern:**



**Video playback pattern:**



### 11. Kindly reminder:

**Motion detection:** when motion detection turn on, it will start video-recording during driving, will stop video-recording by parking, Recommend to set: "OFF"

**G-sensor:** when vehicle collision happened, the video will lock to save automatically not to be covered, and protect important data. Recommend to set : "MIDUM"

**WDR function:** Screen Saver function: after screen saver function turning on, the

screen will be closed at the corresponding time, Recommend to set:  
“ OFF”

Light frequency: will depend light frequency on different regions, recommended to set:  
“50Hz or 60Hz”

Loop video: this function can choose 2 minutes, 3 minutes or 5 minutes long video,  
the file is so large that un-conducive to the protection of important  
document, recommended to set: “2 minutes”

## **12. Precautions**

- 1) First confirm the position of master GR-7 on the dashboard in the front of car, use soft cloth to clear up dashboard to insure 3M glue result
- 2) Remove protective film of 3M glue on master GR-7 bottom and fix it on dashboard ( don't move within 24 hours )
- 3) Connect the power cable in the direction of arrow tightly, wiring along the gap between dashboard and windshield , cigarette lighter power can be connected.