

# Bentley 2012 New Continental / GT Manual



**BENTLEY**



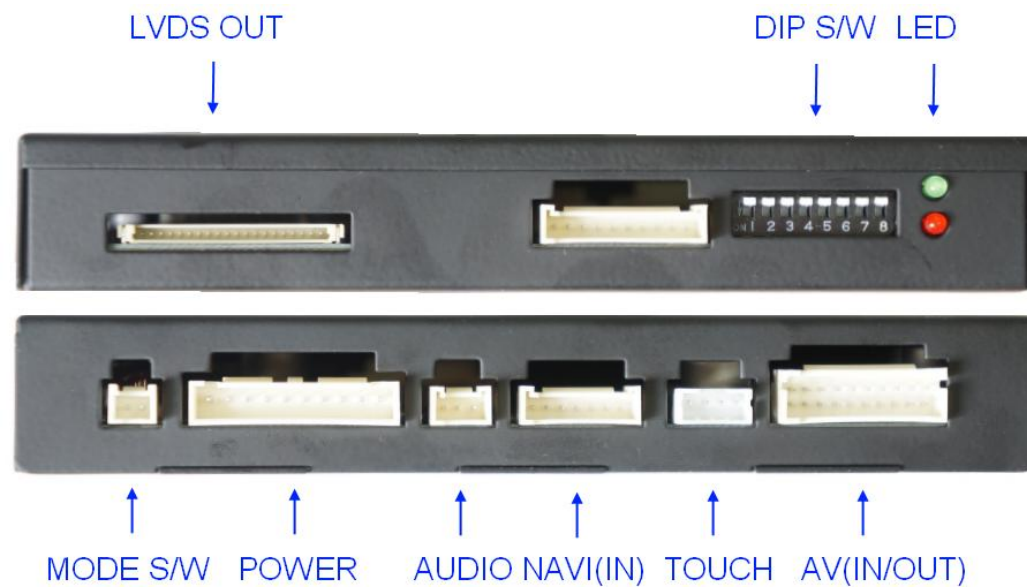
# About Interface

## - Dimension

136mm \* 83mm \* 21mm

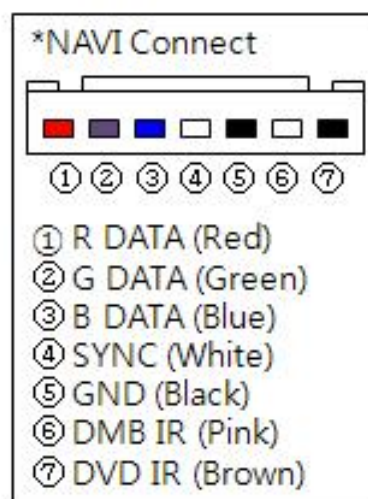
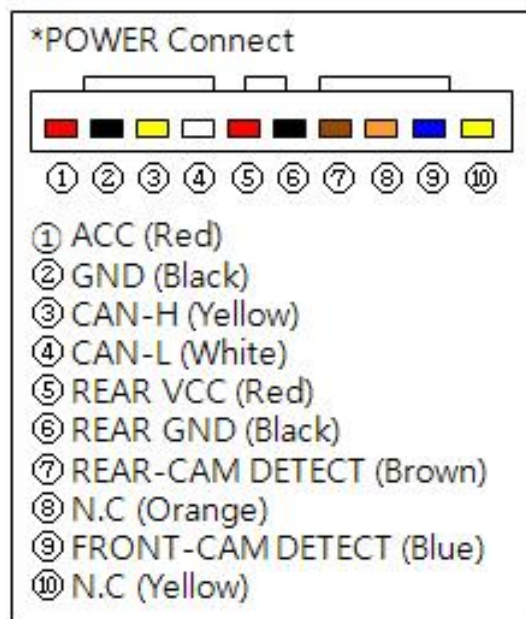
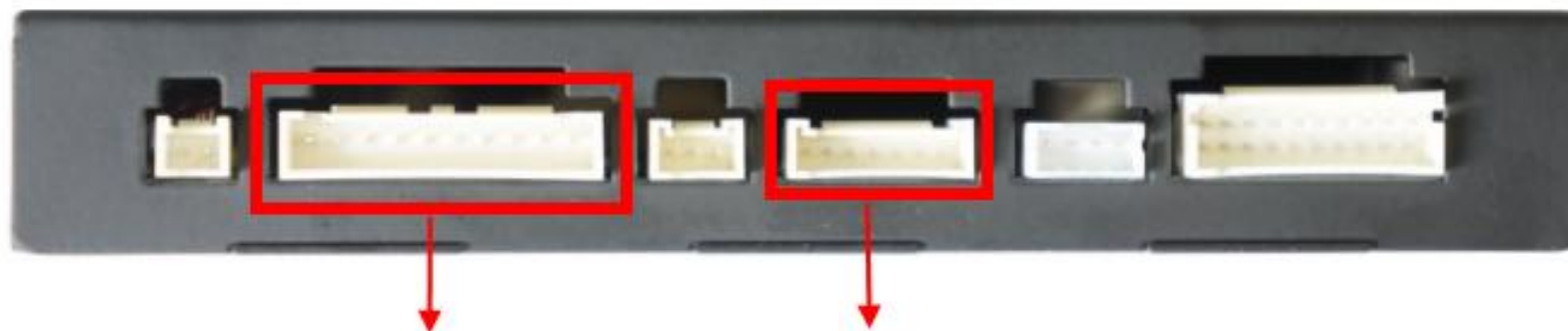


## - External Appearance



→ This can change under manufacturer's circumstance

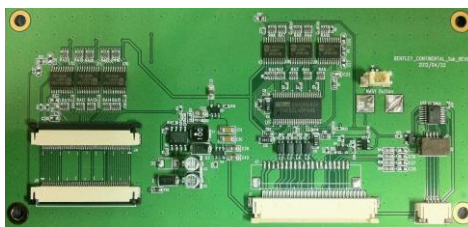
# Connector Pin Assignment



# Product Composition



**Interface Board 1 EA**



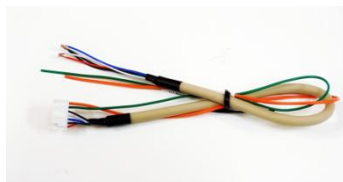
**Sub Board 1 EA**



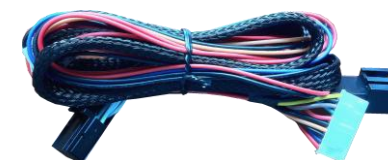
**LVDS FPC Cable 1 EA**



**AV Cable 1 EA**



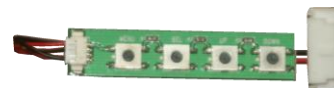
**RGB Cable 1 EA**



**Power Cable 1 EA**



**JIG Board 1 EA**



**OSD Board 1 EA**



**Touch FPC Cable (100mm) 1 EA**



**LVDS Cable (800mm) 1 EA**



**Mode S/W 1 EA**



**Audio Cable 1 EA**

# DIP S/W Setting

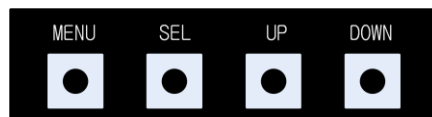
※ ON : DOWN , OFF : UP

PIN	FUNCTION	DIP S/W Selection
1	NAVI INPUT MUTE	ON : Skipping NAVI Mode OFF : NAVI Display
2	AV1 MUTE	ON : Skipping AV1 OFF : AV1 Display
3	AV2 MUTE	ON : Skipping AV2 OFF : AV2 Display
4	Navi Mode	ON : NAVI-AV Sellation OFF : NAVI-RGB Sellation
5	N.C	
6	N.C	
7	N.C	
8	N.C	



# OSD Control

## OSD Control Board



MENU	Push -> OSD menu On/Off
SEL	Item Selection, Value Selection
UP	Item Up / Increase selected value
DOWN	Item Down / Decrease selected value

Mode State

MENU	Config		NAVI
Config	NAVI-RGB	KD900(WVGA)	
Option	NAVI-AV	Default	
Image	DVD	ELT-980XU Slim	
Screen	DVB-T(DMB)	ELT-DVBT20	
Parking	BlackBox	Default	

First Menu      Second Menu      Third Menu

# OSD Control

First Menu	Second Menu	Third Menu	Action
Config	GPS - RGB	GI4000	Selection Korea 480*234
		GI8000	Selection Korea 800*480
		PT-GPS800HD	Selection China 800*480
		LC260(WVGA)	Selection China 800*480
		KD900(WVGA)	Selection China 800*480
		KD900(WVGA)	Selection China 480*234
	GPS - AV		
	DVD		
	DVB-T (DTV)		
	Reset		Excute

# OSD Control

First Menu	Second Menu	Third Menu	Action
Option	RearCam – Type	OEM	Use Original Rear camera
		Ext-Device	Use aftermarket Rear camera
	RearCam – Power	On	Rear camera get +12V consistently
		Auto	Rear camera get +12V when reverse gear on
		Off	Shut out the power supply
	FrontCam – Type	OEM	Original Front camera
		Ext-Device	Use aftermarket Front camera
	FrontCam – Power	On	Front camera get +12V consistently
		Auto	Front camera get +12V when reverse gear on
		Off	Shut out the power supply
	RearCam - RcvOpt	On	Show Frontcam 25sec after rear mode
		Off	Default
	Reset	Excute	Option Menu all Reset

**Rear camera: Don't need to install to back-light.**

**(Rear camera ACC, GND, Detect wires connect to our power cable. (Wire = 5,6,7)**



# Front Camera



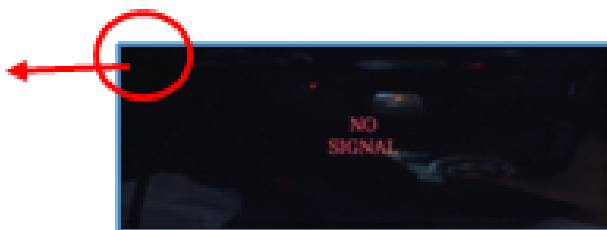
\*POWER Connect

①	②	③	④	⑤	⑥	⑦	⑧	⑨	⑩
ACC (Red)	GND (Black)	CAN-H (Yellow)	CAN-L (White)	REAR VCC (Red)	REAR GND (Black)	REAR-CAM DETECT (Brown)	N.C (Orange)	<b>FRONT-CAM DETECT (Blue)</b>	N.C (Yellow)

Connect +12V, Front camera work on.

But, Can't work on "Rear camera" mode  
Work on "OEM, NAVI, AV1, AV2" mode.

**"Front"** appears for 3 sec  
When in change mode..



# Install Manual

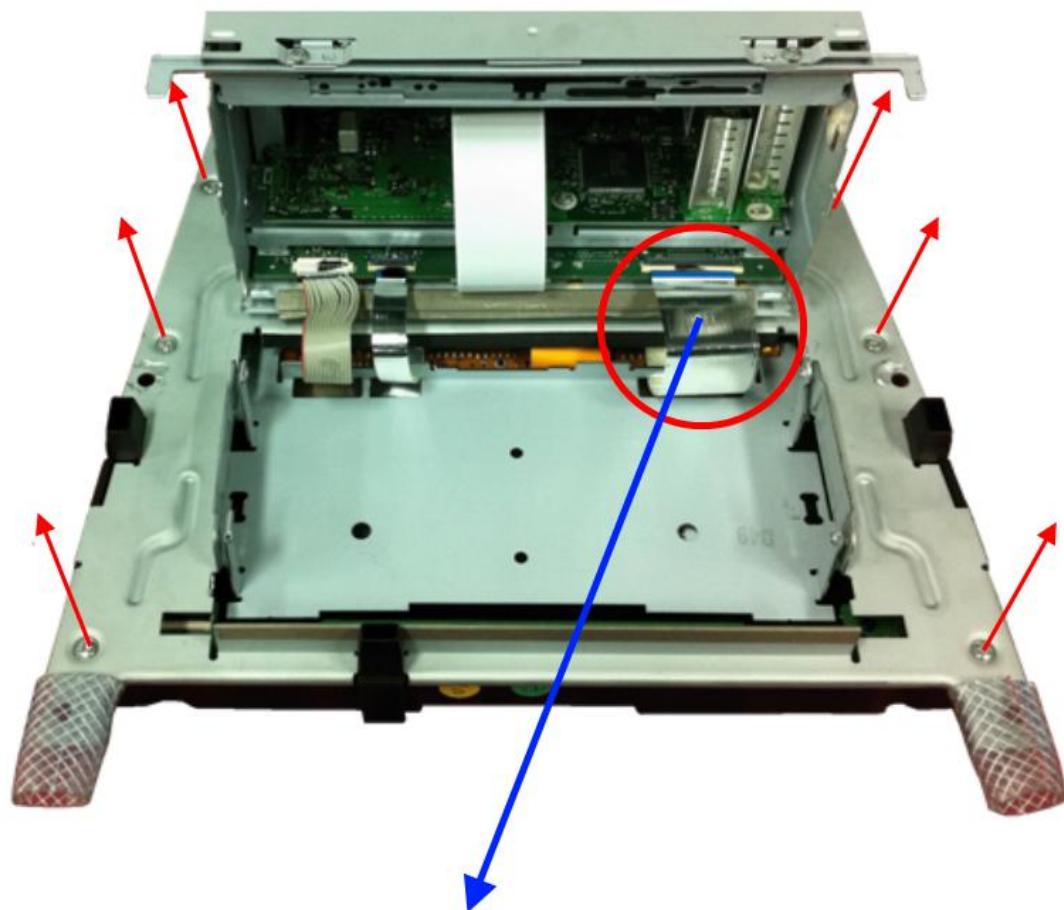
## 1-1 Monitor Dismantle



Remove the screw

# Install Manual

## 1-2 . Monitor Dismantle

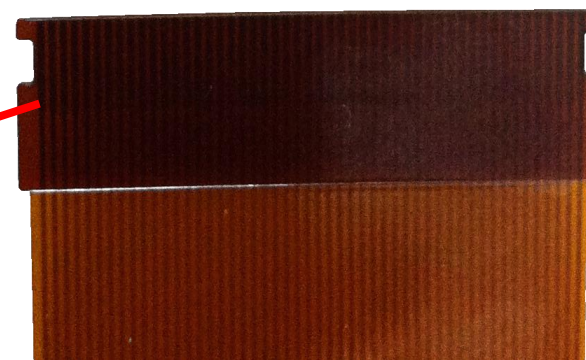
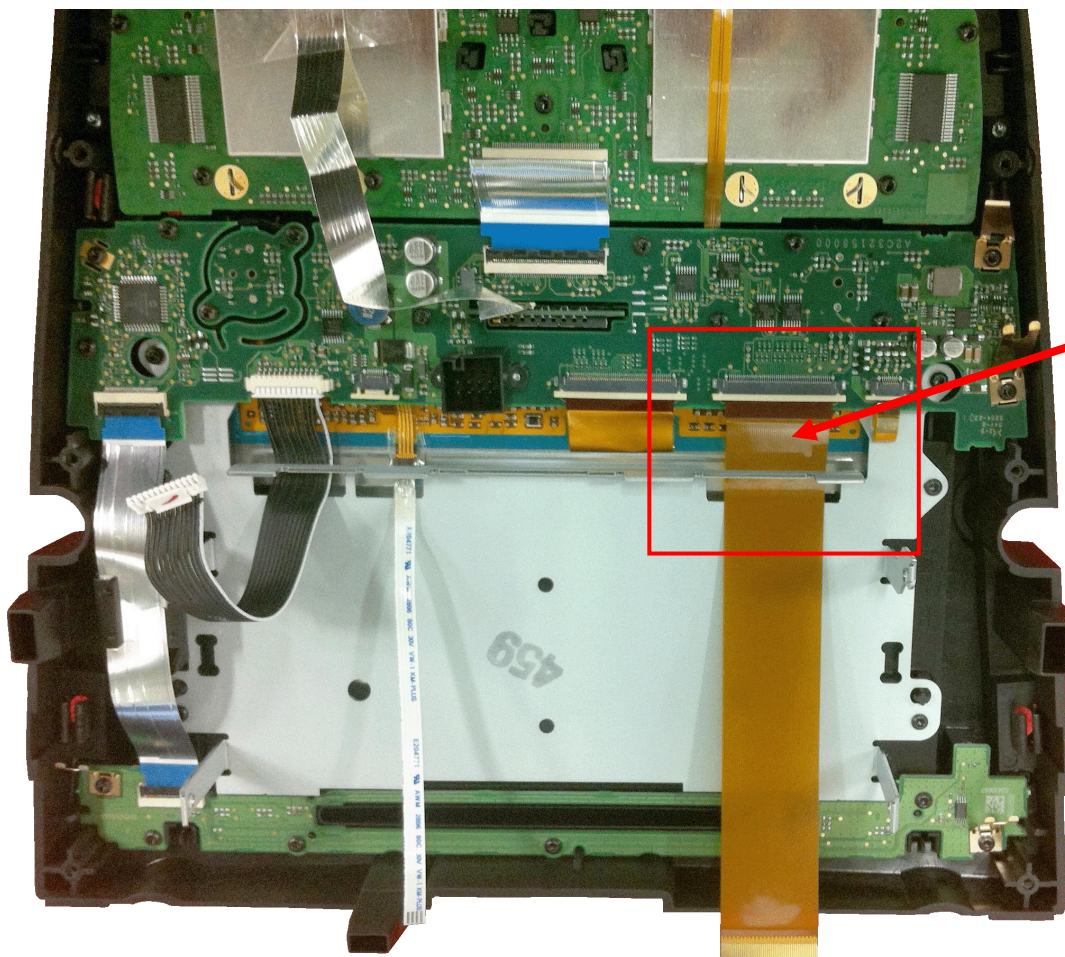


Remove the "Silver color FPC Cable". (Not Use)



# Install Manual

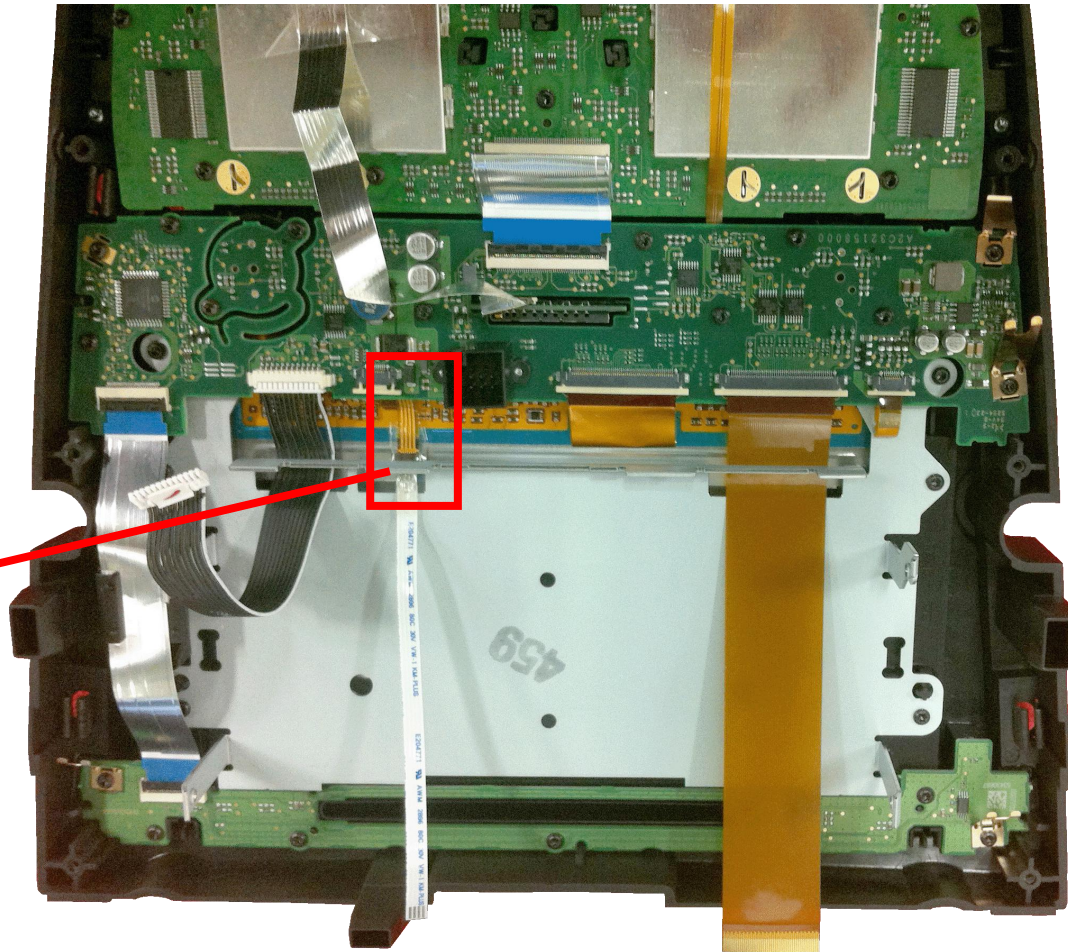
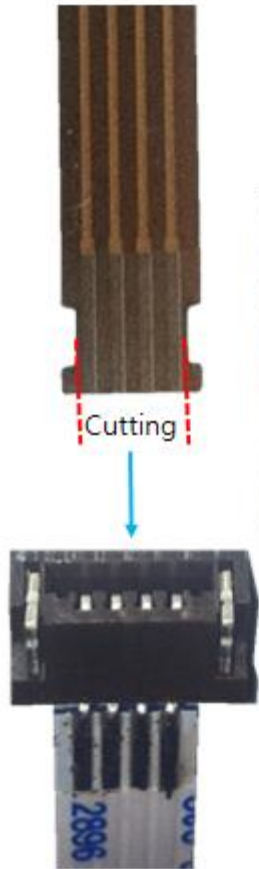
## 1-3 Touch FPC cable connection



(150 mm)  
LVDS FPC Cable

# Install manual

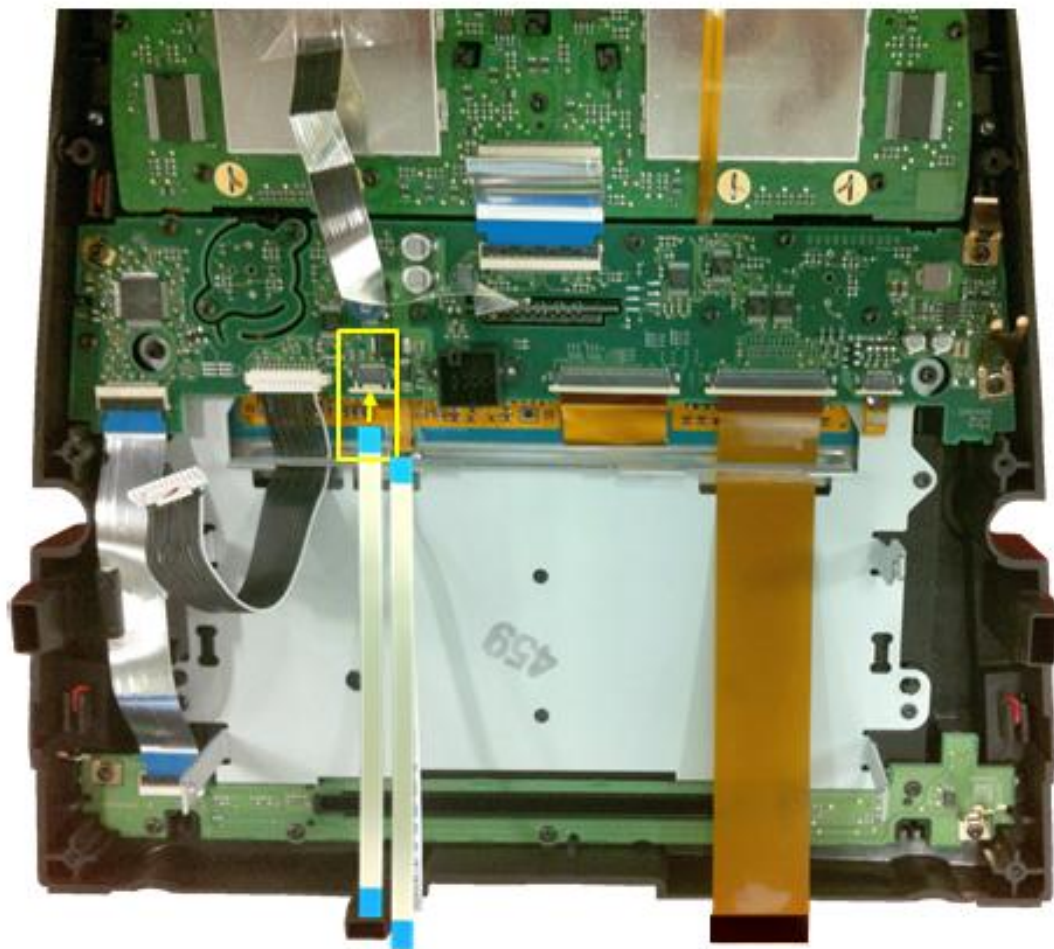
## 1-4 Touch FPC cable connection





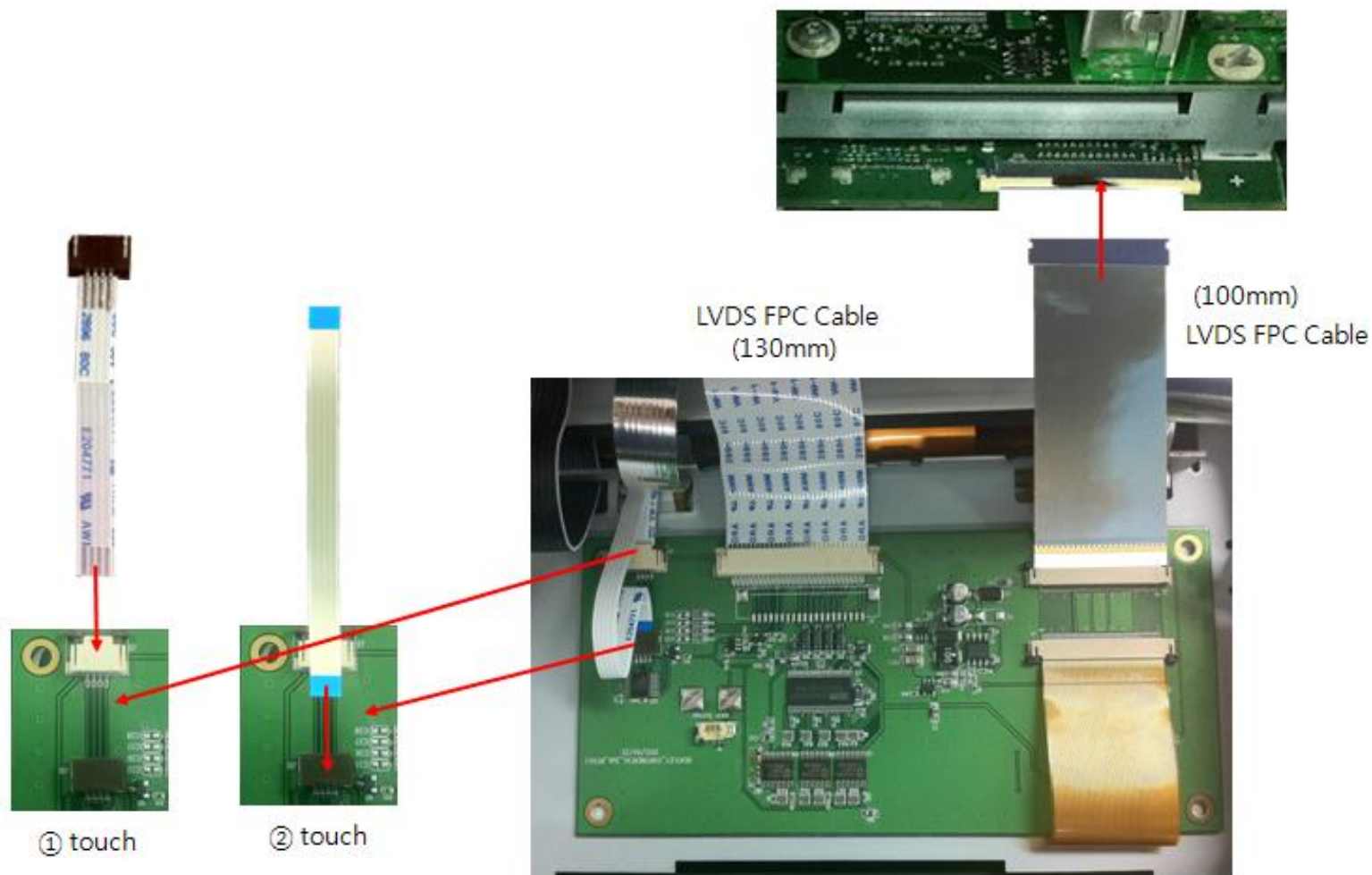
# Install manual

1-5 Touch FPC cable connection



# Install manual

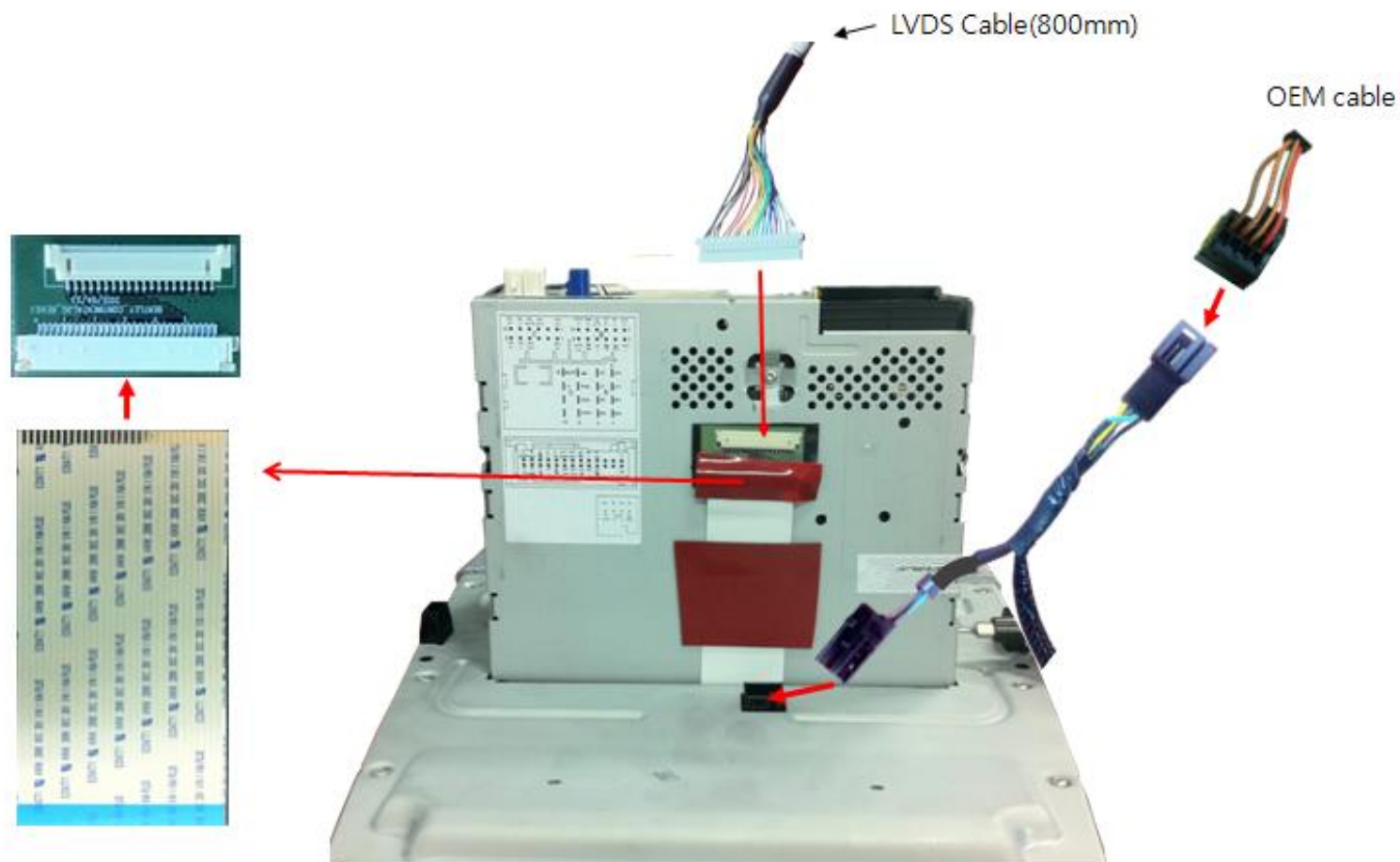
## 1-6 Sub board Install





# Install manual

## 1-7 Jig board Install



## FAQ

1. If Interface has a problem, Please check LED.

- After acc turn on, If Interface does not have a problem; **GREEN** LED is blinking every 1 sec.
- **RED** LED is turn on (not blinking), Interface has a problem.
- **RED** LED is not turning on, there is no input device.
- **RED** LED and **GREEN** LED both are not turn on, check to power cable.

2. When monitor changed to Orange color.

- LVDS cable contact problem or cable problem.

3. When DTV or DVD mode, cannot control with I-Drive

- Check IR cable, and DTV or DVD device's ground cable and Interface ground cable join together with using extra cable.
- Check device in OSD menu

4. Mode change : USE MODE S/W

