

Installation Manual

HDMI Interface for New Toyota
Model : QHI-LVIX(HH)-T&G2



• Specification

Car Compatibility : Toyota Corolla, Rav4, Hilander, Prado, Corolla Verso, Yaris, Auris. (*Panasonic Monitors must be installed.)

Components : Interface* 1ea, Sub-board*1ea

Multimedia interface Input/output spec

Input : HDMI*2, Analog RGB*1, A/V*1,

CVBS(Rear view Camera)*1, CVBS(Front camera)*1

Output : To LCD*1

Power spec

Input power : 8VDC ~ 18VDC

Consumption : 5WATT

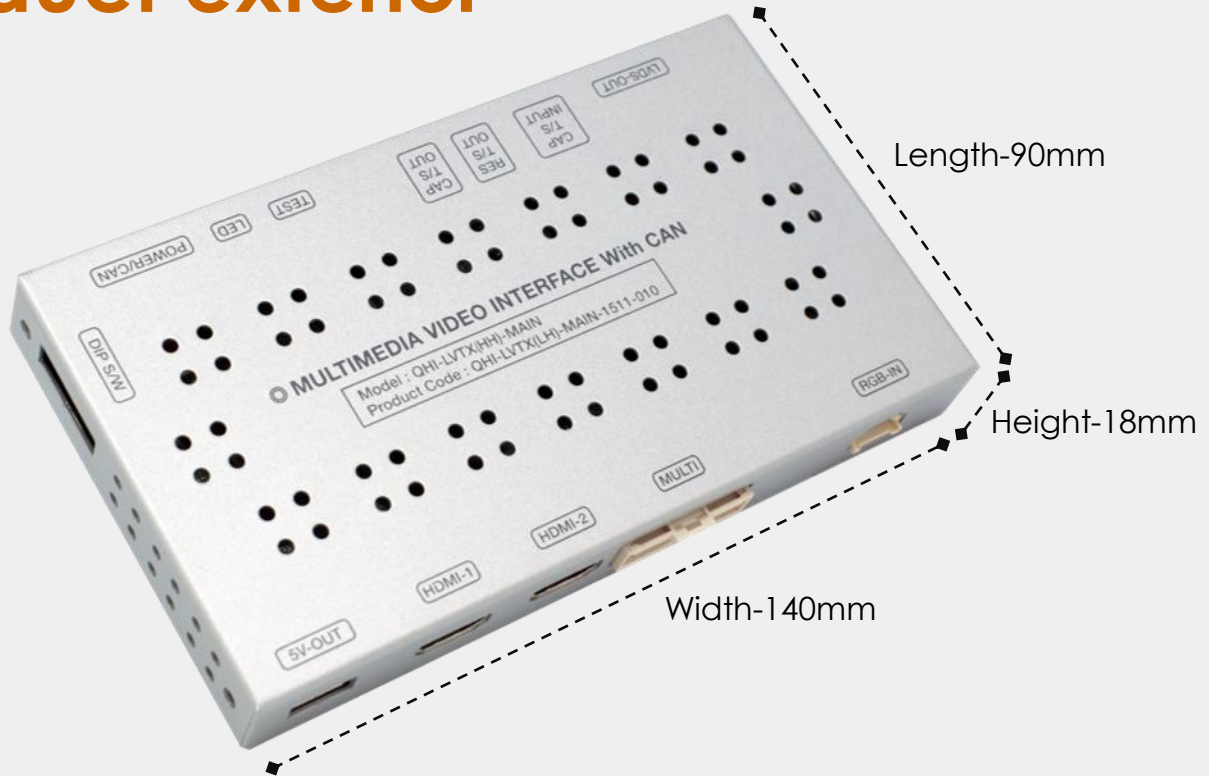
Switch input mode

- External video sources skip function : able to control input videos on and off via DIP switches.
- Able to switch videos via the remote, button switch, and original buttons.
- Able to detect the rear view camera (back up camera) via Lamp or CAN.

• Features

- Able to output high resolution video via HDMI input
- Control external videos sources (DVD, DTV) via Multi Media Touch
- Adjust external videos screen position
- Check the improved Screen Display (User Friendly Interface)
- Switch modes via original OEM button
- Supply power to connect rear view camera (Back up camera)
- Assist your parking via Dynamic PAS(Parking Assistance System), PDC(Parking Distance Control), moving parking line according movement of steering wheel

• Product exterior



5V-OUT(Power supply for Mirroring device) | HDMI-1 | HDMI-2 | MULTI | RGB-IN(RGB Navigation input)
 LVDS-OUT(Connection to Sub-board) | CAP T/S INPUT(NOT FOR USE) | RES T/S OUT(Original touch
 cable connection) | CAP T/S OUT(TOUCH CABLE CONNECTION-ONLY ITS PRODUCT) | TEST(NOT
 FOR USE) | LED | POWER/CAN(Power / CAN connection) | DIP S/W(DIP switch setting)

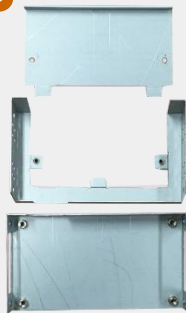
• Components



Sub-board * 1ea
(HTOUCH0031)



Touch Sub-board * 1ea
(QCPASS0315)



Bracket * 3ea
()



FFC * 4ea



POWER * 1ea
(HPOWER0097)



MULTI * 1ea
(HAVCAB0038)



LVDS * 1ea
(HLVDSC0028)



TOUCH OUT * 1ea
(HTOUCH0029)



LVDS * 1ea
(HRGBCA0018)



BUTTON * 1ea
(HARETC0001)



IR * 1ea
(HIRCAB0002)



RC * 1ea
(REMOTE0001)

• DIP SWITCH



※ ON : DOWN / OFF : UP

PIN	FUNCTION	Dip S/W SETTING
1	RGB INPUT MUTE	OFF : RGB DISPLAY ON : Skipping RGB Mode
2	HDMI1 MODE MUTE	OFF : HDMI1 DISPALY ON : Skipping HDMI1 Mode
3	AV MODE MUTE	OFF : AV DISPLAY ON : Skipping AV Mode
4	FRONT CAM MUTE	OFF : Front camera function on ON : Front camera function off
5	NO USE (OFF)	
6	MONITOR SETTING	OFF : Default
7	REAR MODE	OFF : OEM Rear Camera ON : External Rear Camera
8	NO USE (OFF)	

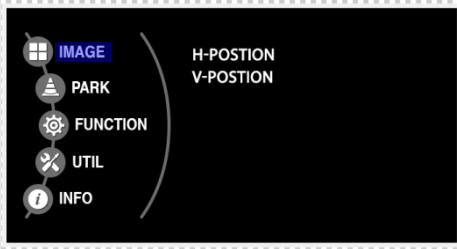
※ Please make sure to disconnect the power cable of the interface and reconnect the power cable again to apply the dip switch setting whenever changing DIP switch. Otherwise, DIP switch setting will not be applied.

• REMOTE CONTROL SETTING



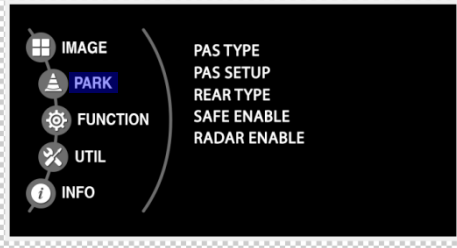
KEY	FUNCTION
POWER & PIP	NO USE
MENU	Activating FACTORY MENU
OK	Making a selection, changing image display
▲	Moving upward
▼	Moving downward
◀	Moving leftward (If you press this button 2 seconds long, you can access the factory mode.)
▶	Moving rightward (If you press this button 2 seconds long, you can reset all the data about user environment.)

• Factory setting



Adjust a current screen position and size.

H-POSITION : Move display horizontally
V-POSITION : Move display vertically

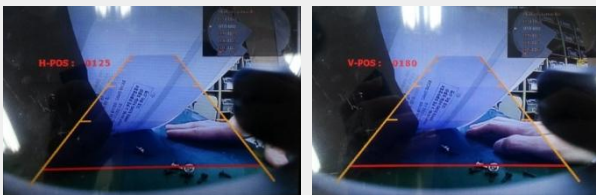


Adjust rear view camera setting.

PAS TYPE : Select type of parking guide line

- NOT USED : No use parking guide line
- PAS ON : Selecting Dynamic parking guide line
- PAS OFF : Selecting fixed parking guide line

PAS SETUP : Adjusting the position of the parking guide line



<H-POSITION>

<V-POSITION>

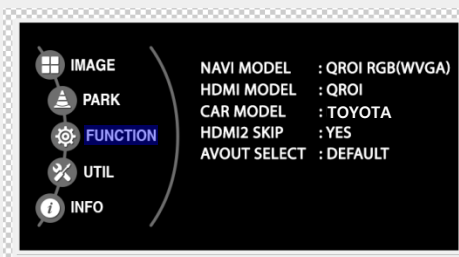
REAR TYPE : Choose rear camera recognition.

- CAN : By connecting to "CAN" cable of the car gear, changing to rear camera mode when shifting into reverse. (Connect "CAN" cable of the power cable to the "CAN" cable of the car gear.)
- LAMP : By connecting to the rear lamp of the car, switch to rear camera mode when shifting into rear. (Connect "Rear-C" cable of the power cable to the rear lamp of the car.)

SAFE ENABLE : If it is enable, HDMI, RGB, and A/V mode doesn't show up while driving. (Default : OFF)

RADAR ENABLE : Setting up parking distance alarm sensor. (ON/OFF)

• Factory setting



Navigation & Car model setting up

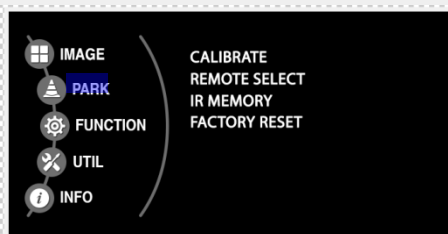
NAVI MODEL : Setting up RGB Navigation. (Default, Q-roi RGB, WP9230, HDMI(WVGA))

HDMI MODEL : Setting up HDMI1 Navigation. (Q-roi RGB, WP9230)

CAR MODEL : Selecting the model of car. (Toyota)

HDMI2 SKIP : Skipping HDMI mode when switching modes.

AVOUT SELECT : Selecting background sound through car AUX. HDMI1, HDMI2, AV)



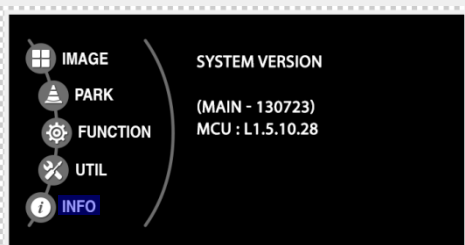
Other options setting up

CALIBRATE : Able to calibrate touch screen

REMOTE SELECT : Able to use remote control on DVD, DTV by selecting “User” after IR memory registered. (Default, User)

IR MEMORY : Registering IR memory (Remote control values) of DTV, DVD.

FACTORY RESET : Factory mode reset.



System version information

• How to use OEM buttons



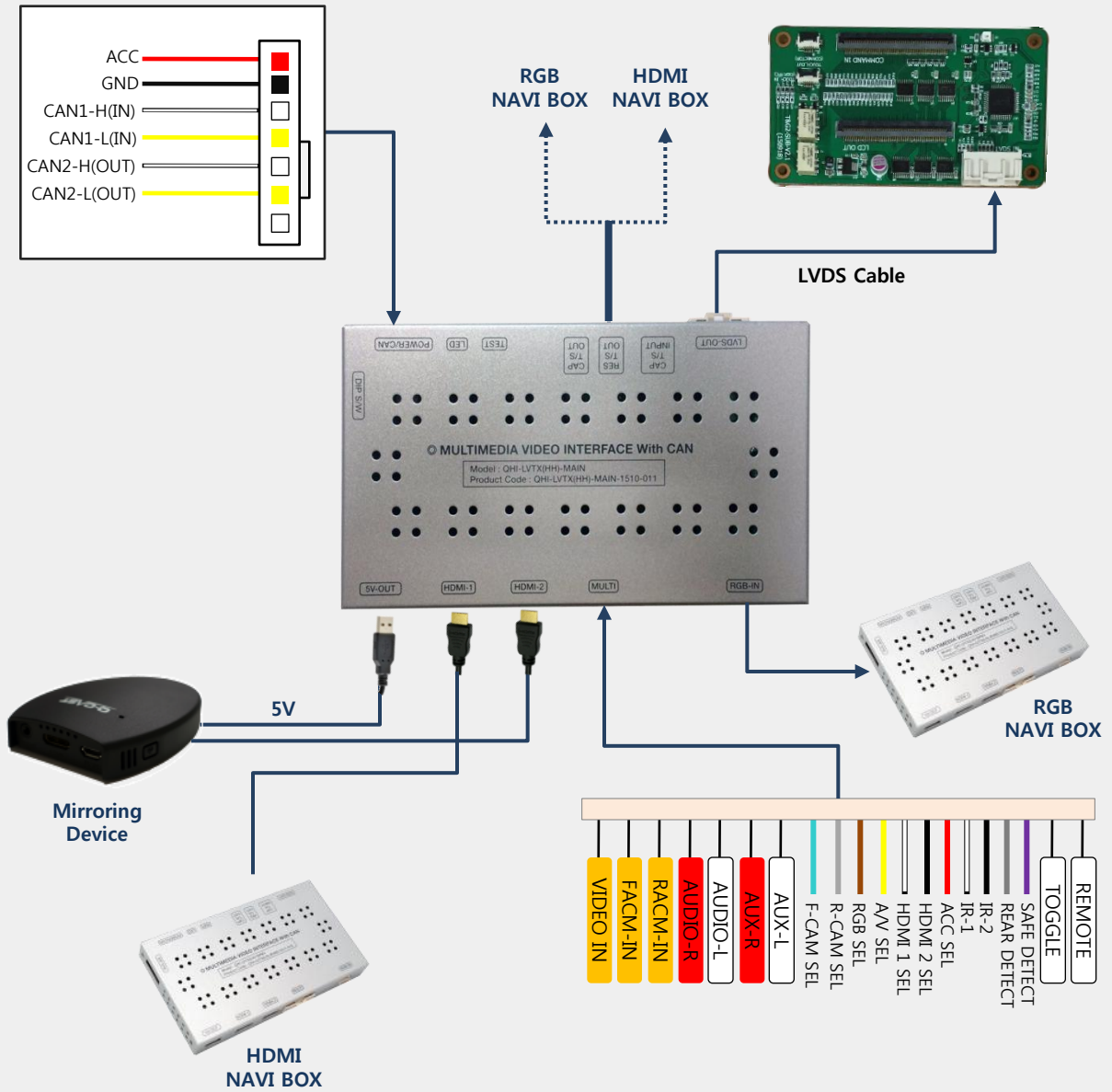
※ Able to switch modes via NAV button of car monitor.

* Long press : Switching modes

(RGB→HDMI1→HDMI2→A/V→OEM Mode)

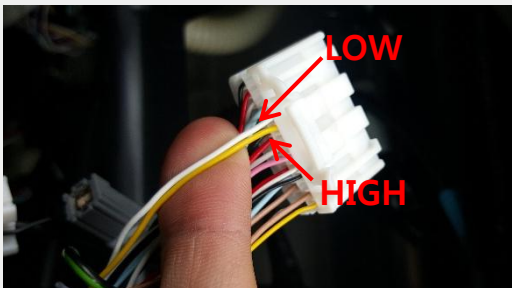
* Short press : Switching to OEM Mode.

• Installation Diagram



※ HDMI NAVI must be connected to HDMI-1.

• CAN cable connection



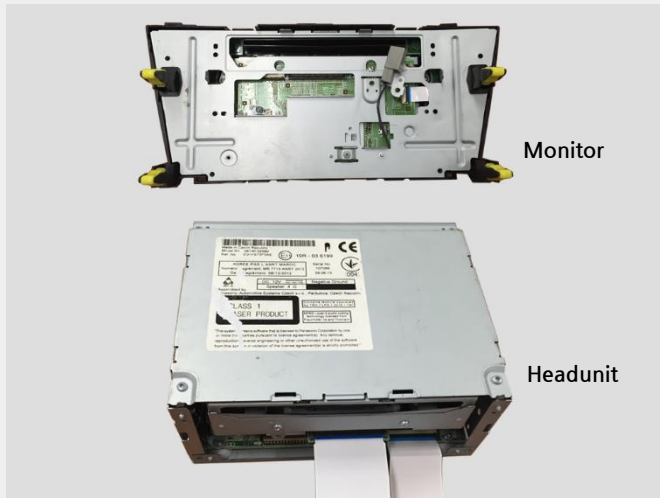
- ※ Find the original cable at the back side of monitor.
- CAN LOW(#5 pin) → Connect to CAN1-H(White)
- CAN HIGH(#6 pin) → Connect to CAN1-L(Yellow)

※ Color of cable would be different depending on Cars.



Pin map

• Connection of monitor



Take apart the monitor and head unit from the car.

Disassemble the monitor as above.

※ Check all of the provided FFC cables as below.

80P / 160mm

FFC Cable Type A
(FFCBAL0059)

80P / 200mm

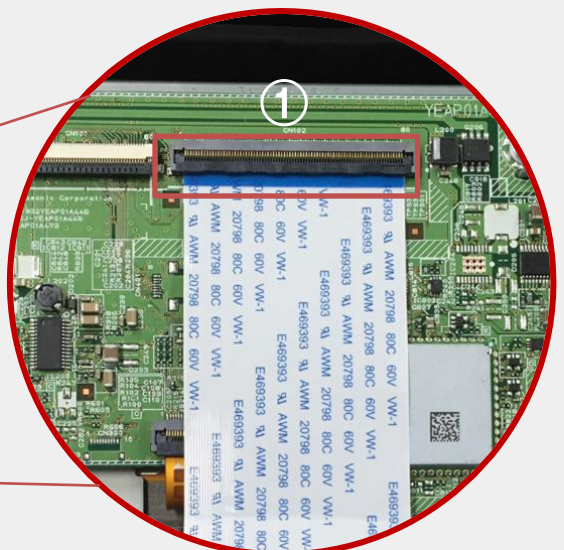
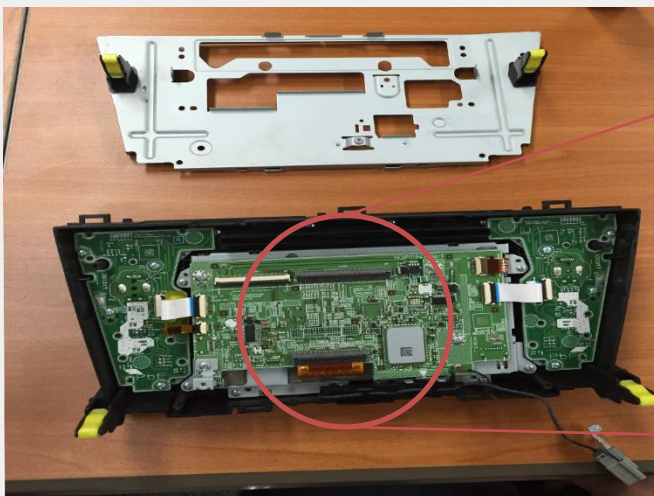
FFC Cable Type B
(FFCBAL0060)

8P / 300mm

FFC Cable Type C
(FFCBAL0061)

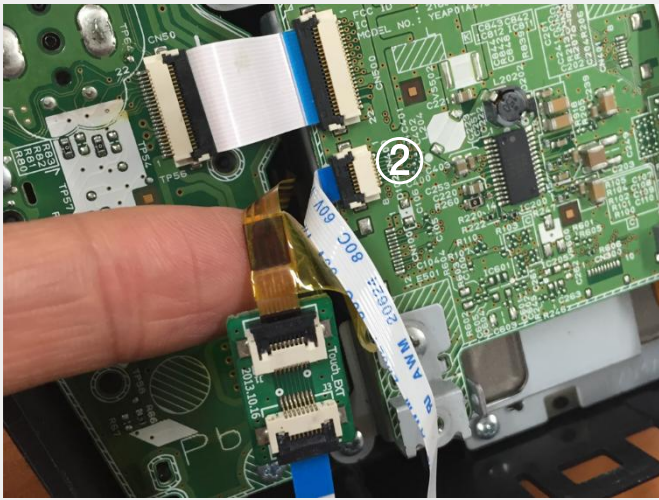
8P / 300mm

FFC Cable Type D
(FFCBAL0062)

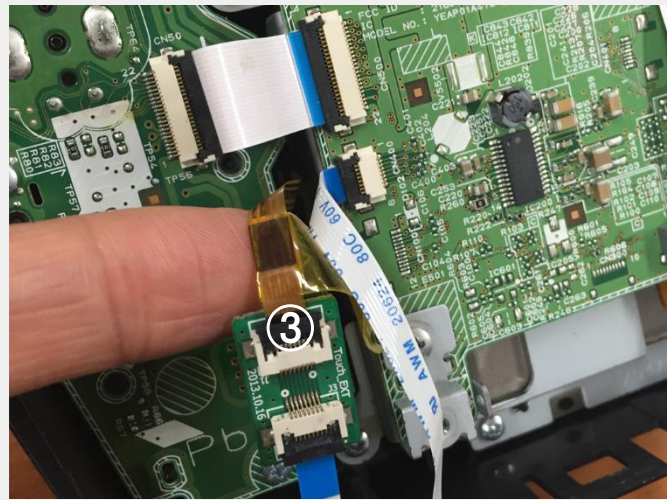


Connect the provided **FFC cable Type B** to ① Connector (CN101) as above.

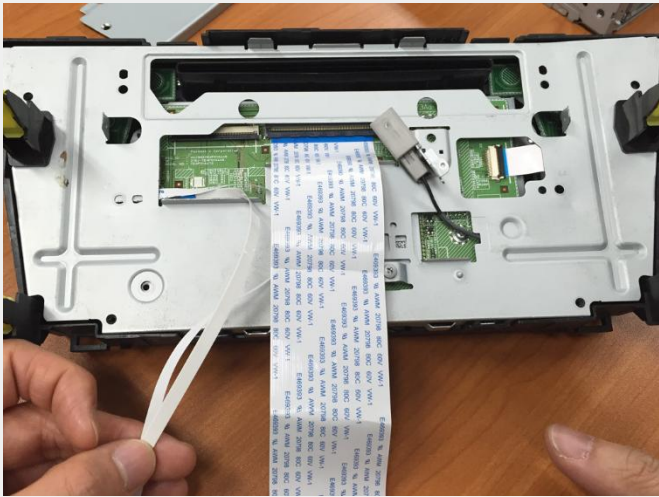
• Connection of monitor



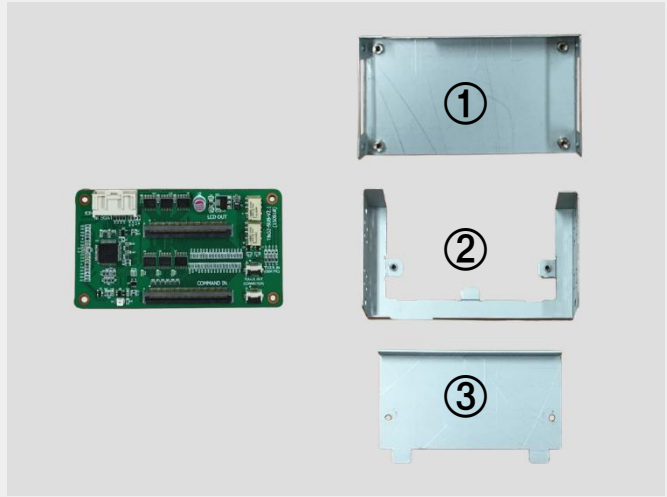
Disconnect the original touch cable from ② Connector and connect the **FFC Type C** to ② Connector as above.



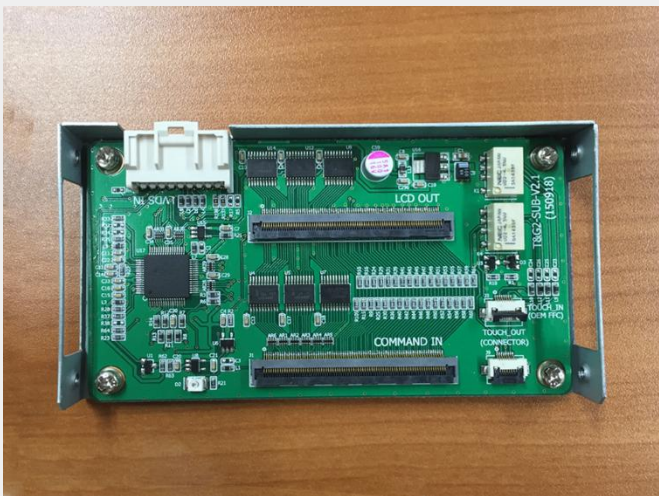
Connect the original touch cable to the provided touch sub-board as ③ and connect the **FFC Type D** to the other side.



Reassemble the monitor.



Sub-board and brackets

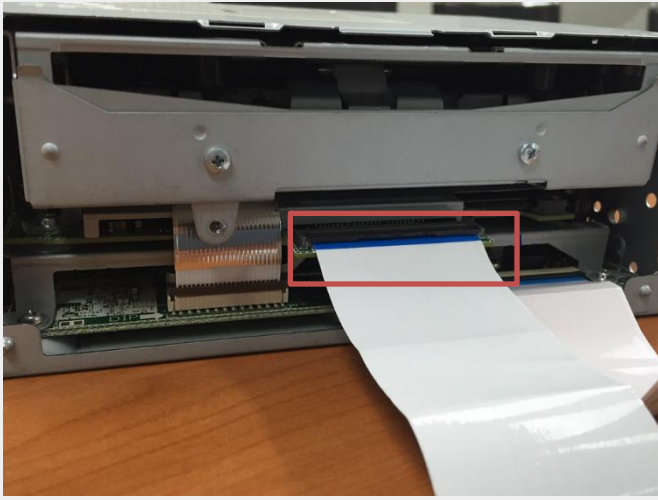


Screw 4 spots on Sub-board to assemble it to bracket ①.

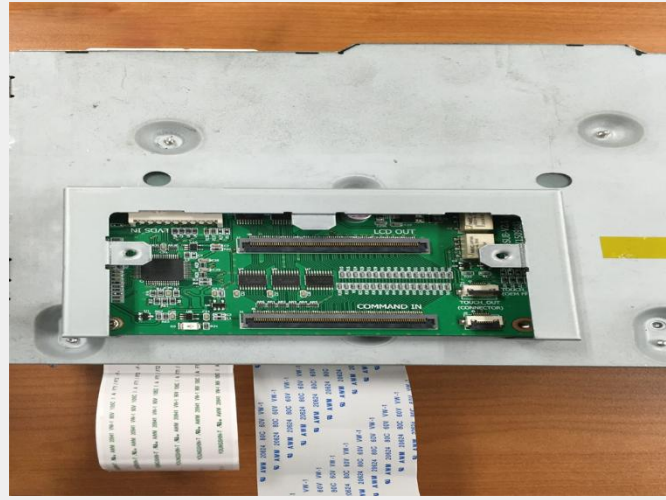


Screw 4 side spots on bracket ② as above.

• Connection of monitor



Disconnect the original FFC cable from head unit and connect the provided FFC cable Type A to the marked. (Keep the original FFC cable in case)



Attach the assembled Sub-board on the back side of head unit.



Connect the FFC cable Type A to 'COMMAND IN' connector on the Sub-board.



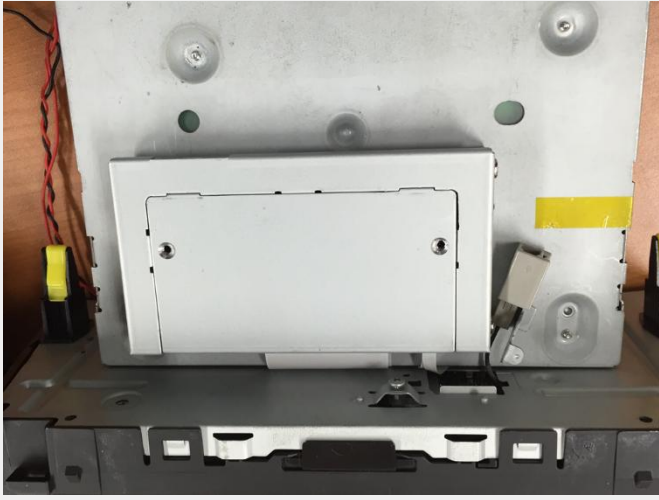
Connect the marked original cable to 'CN102' connect on the monitor.



3 FFC cables from the monitor.

Connect
FFC cable Type B to 'LCD OUT' ①.
FFC cable Type C to 'TOUCH OUT' ②.
FFC cable Type D to 'TOUCH IN' ③.

• Connection of monitor



Reassemble the monitor to head unit and finish with bracket ③.

• Trouble shooting

Q. I cannot change mode

A. Check connection of Ground cable and IR Cable. Check LED lamp is on, if not check connection of POWER cable.

Q. All I got on the screen is black.

A. Check second LED lamp of the interface is on, if not, check A/V sources connected are working well.
(Second lamp indicates AV sources connected works well.)
Check interface connection has been done well.

Q. Displayed image color is not proper (too dark or unsuitable color)

A. Press ► button on the remote control for 2 seconds and check how it goes, if it does not work, inform to manufacturer.

Q. I cannot watch the rear camera on the screen

A. Set the DIP switch #7 as state "ON".

Q. Set mode not appear

A. Check DIP Switch.

Q. OEM image is not displayed.

A. Check interface's LCD In/Out cable connection. If the status keeps on, inform to manufacturer.

Q. Screen only displays white color.

A. Check LCD out cable is connected well, if this status keeps, inform to manufacturer.

Q. If no image is shown on screen after connecting CAN wire with Park gear.

A. Go on the "MENU", check "UTIL-Rear Select". If "LAMP", change the setting as "CAN" with the remote control. (※ when connecting Rear-C wire of LAMP power cable to Backup lights, Setting should be like this / CAN : if controlling rear camera with CAN wire)

Q·DIS

RM #404 4TH FLOOR, B-DONG,
WOORIMLIONSVALLY, 371-28, GASAN-DONG,
GEUMCHEON-GU, SEOUL, KOREA.
TEL : 82-2-868-3627~9 | FAX : 82-2-2026-5987